

**BAROQUE
70" ACRYLIC
ROLL TOP TUB**

Cat. No.
ATRN70LP



L: 69-1/2"
W: 31-1/2"
H: 25-1/4"

Water depth: 17" to top of tub
Water depth: 12-1/2" to overflow

**The following is recommended for
ATRN tubs:**

- Faucets: part #4602, 4604 or 7082
- Rigid, freestanding supplies: part #4502
- Leg tub drain: part #5599

Gallon Capacity : 35
Shipping Weight: 375 lbs.
Empty Weight: 150 lbs.
Filled Weight: 443 lbs.

Features:

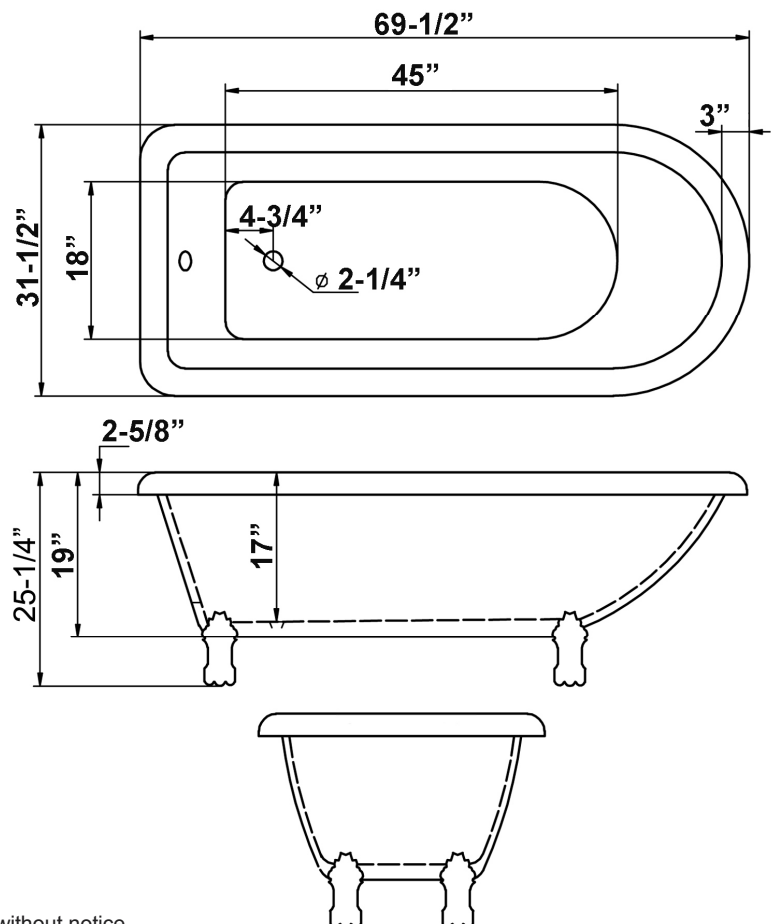
- Acrylic construction for lighter weight
- No faucet holes
- Pre-drilled overflow hole
- Cast aluminum lion paw feet available in 4 finishes
- Tub is thoroughly inspected before shipment

Feet Finishes:

BN Brushed Nickel
CP Polished Chrome
PB Polished Brass
ORB Oil Rubbed Bronze



Custom Colors Available (inside of tub is always white enamel):
Painted bathtubs are considered "special order" and are not returnable
\$160 Bisque or Black \$250 Designer Color



Dimensions of fixture are nominal and specifications subject to change without notice.