

**59" AMELIA  
ACRYLIC ROLL  
TOP TUB**

Cat. No.  
ATRN58



L: 59"  
W: 30-1/2"  
H: 24"

Water depth: 17-3/8" to top of tub  
Water depth: 13-1/8" to overflow

**The following is recommended for ATRN tubs:**

- Faucets: part #4602, #4604 or 7082
- Rigid, freestanding supplies: part #4502
- Leg tub drain: part #5599

Gallon Capacity :	42
Shipping Weight:	375 lbs.
Empty Weight:	150 lbs.
Filled Weight:	501 lbs.

**Features:**

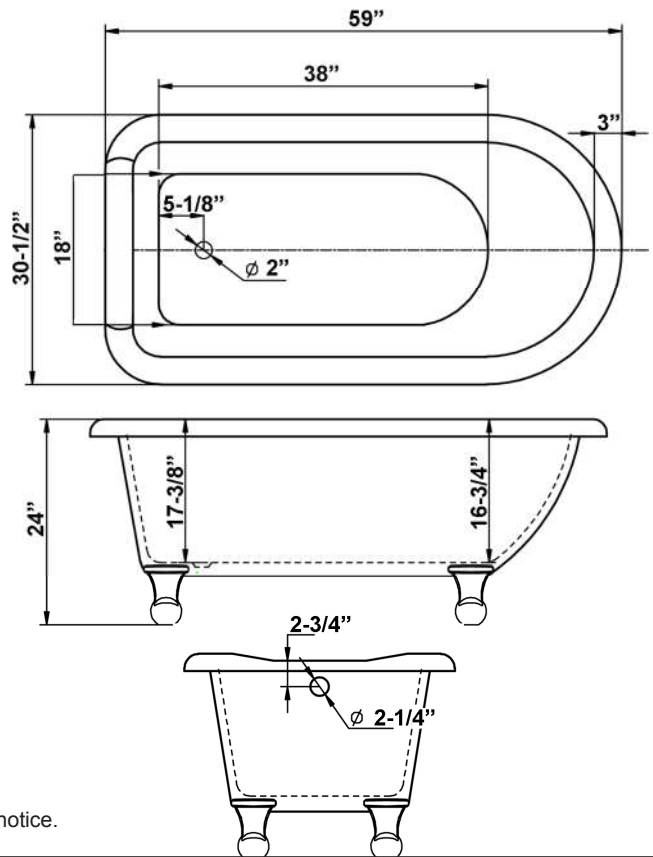
- ▶ Acrylic construction for lighter weight
- ▶ Sloped backrest for comfort
- ▶ No faucet holes
- ▶ Pre-drilled overflow hole
- ▶ Cast aluminum ball and claw feet in 4 finishes
- ▶ Tub is thoroughly inspected before shipment



**Feet Finishes:**

<b>BN</b> Brushed Nickel	<b>PB</b> Polished Brass
<b>CP</b> Polished Chrome	<b>ORB</b> Oil Rubbed Bronze

**Custom Colors Available** (inside of tub is always white enamel):  
Painted bathtubs are considered "special order" and are not returnable  
\$160 Bisque or Black \$250 Designer Color



Dimensions of fixture are nominal and specifications subject to change without notice.