

65" PELHAM ACRYLIC FREESTANDING TUB

Cat. No.
ATOVN65L



L: 64-1/2"
W: 31-1/2"
H: 22-7/8"

Water depth: 17-3/4" to top of tub
Water depth: 13-1/4" to overflow

The following is recommended for ATOVN65L tubs:

- Faucet: part #4602,4604,7082 or 7088
- Rigid, freestanding supplies: part #4502
- Freestanding filler: part #7932,7952 or 7918
(Does not need bath supplies)
- Leg tub drain: part #5599LT or 5599TS



Overflow can be drilled.
With overflow drilled this tub requires drain 5599PD.
Tubs that have been drilled with overflow are "special order" and are not returnable.

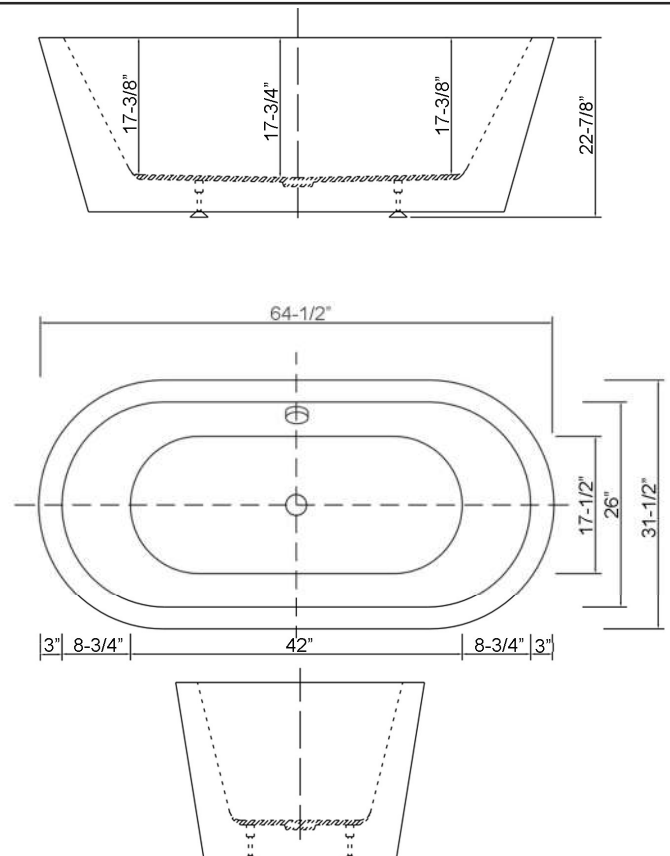
Gallon Capacity without OF:	55
Gallon Capacity with OF:	46
Shipping Weight:	230 lbs.
Empty Weight:	120 lbs.
Filled Weight without OF:	579 lbs.
Filled Weight with OF:	504 lbs.

Features:

- ▶ Interior and exterior walls acrylic sheets
- ▶ Air between sheets provides insulation to help retain warmth
- ▶ Rim is 3" wide
- ▶ No faucet holes
- ▶ No Overflow
- ▶ Includes built-in adjusters
- ▶ Tub is thoroughly inspected before shipment



Custom Colors Available (inside of tub is always white enamel):
Painted bathtubs are considered "special order" and are not returnable
\$160 Bisque or Black \$250 Designer Color



Dimensions of fixture are nominal and specifications subject to change without notice.