

**NOTTINGHAM
66" ACRYLIC
SLIPPER TUB**

Cat. No.
ATFSN66



L: 65-3/4"
W: 28-3/8"
H: 22-3/4"

Water depth: 17-3/4" to top of tub
Water depth: 11-3/4" to overflow

The following is recommended for ATFSN66 tubs:
 •Faucets: part #7901 or 7913
 •Leg tub drain: part #5599LT or 5599TS



Overflow can be drilled .
 With overflow drilled this tub requires drain 5599PD.
Tubs that have been drilled with overflow are "special order" and are not returnable.

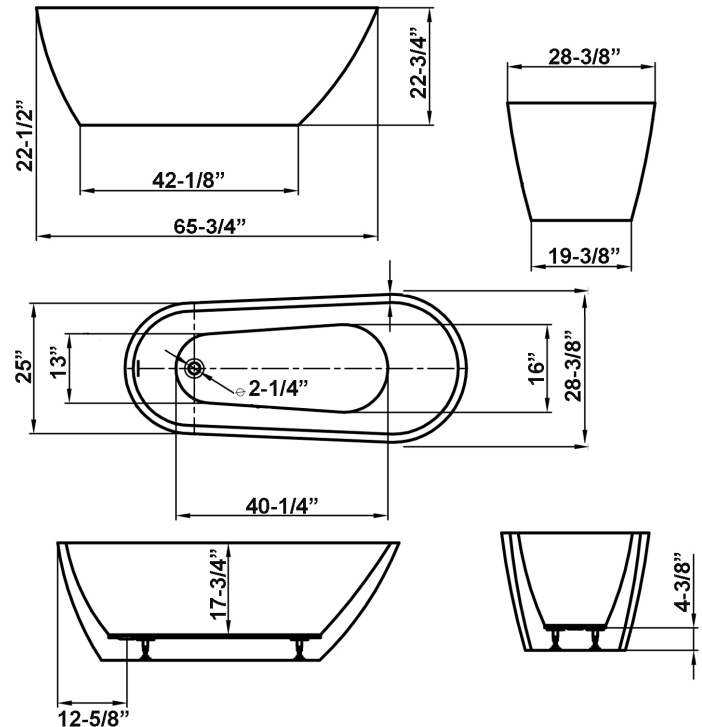
Gallon Capacity without OF: 44
 Gallon Capacity with OF: 38
 Shipping Weight: 282 lbs.
 Empty Weight: 82 lbs.
 Filled Weight without OF: 450 lbs.
 Filled Weight with OF: 399 lbs.

Features:

- ▶ Interior and exterior walls acrylic sheets
- ▶ Air between sheets provides insulation to help retain warmth
- ▶ For use with a freestanding tub filler or faucet mounted on the wall
- ▶ No faucet holes
- ▶ No overflow
- ▶ Tub is thoroughly inspected before shipment



Custom Colors Available (inside of tub is always white enamel):
 Painted bathtubs are considered "special order" and are not returnable
 \$160 Bisque or Black \$250 Designer Color



Dimensions of fixture are nominal and specifications subject to change without notice.