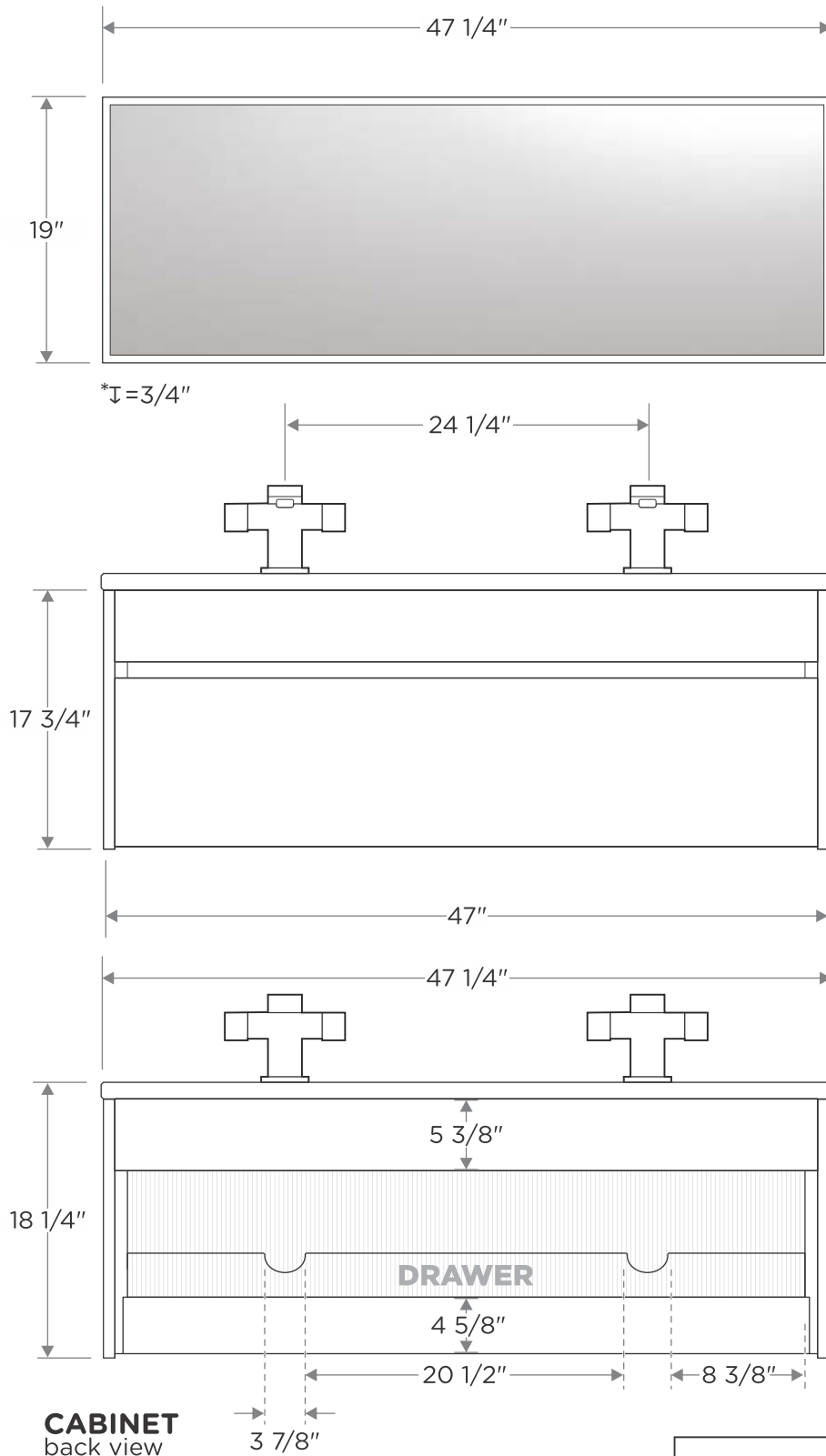


# FVN8512HA SIENA INSTALLATION GUIDE

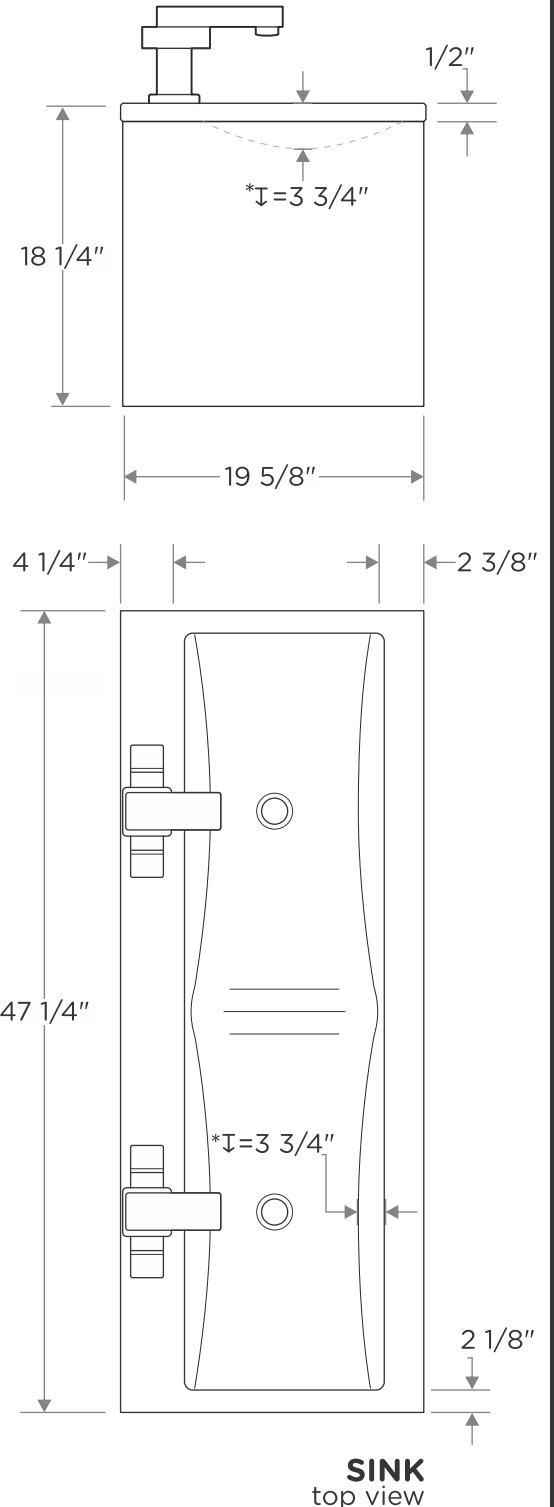


## SPECIFICATION SHEET

**VANITY ENSEMBLE**  
front view



**CABINET**  
side view



\* $\downarrow$  = depth



ALL DIMENSIONS & SPECIFICATIONS  
ARE APPROXIMATE AND SUBJECT TO  
CHANGE WITHOUT NOTICE.



**FVN8512HA | SIENA | INSTALLATION GUIDE**

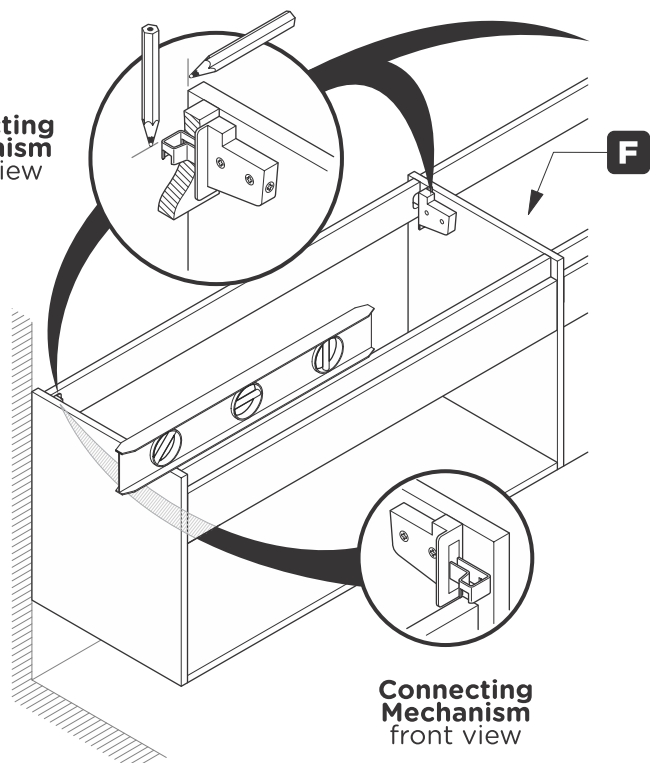
PAGE 1

## TOOLS FOR ASSEMBLY



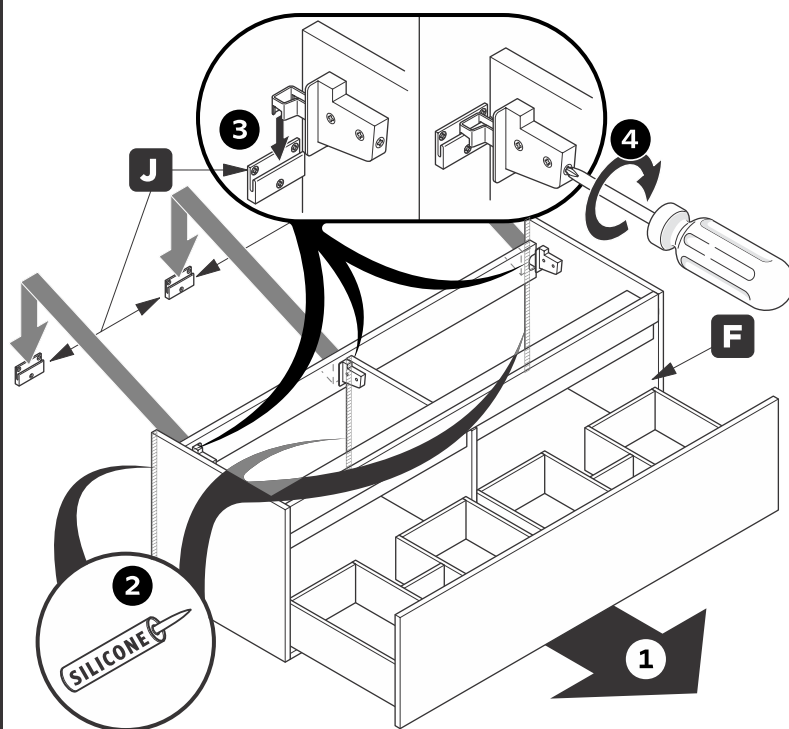
1. Locate cabinet **(F)** & mark desired location using a level.

Connecting Mechanism  
back view



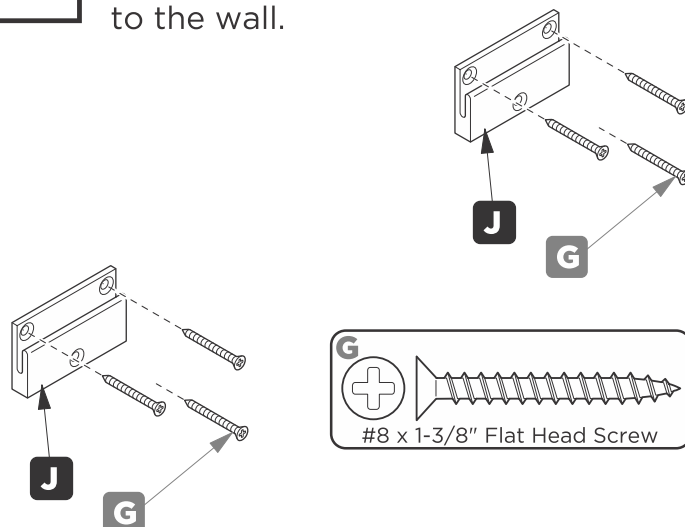
Connecting Mechanism  
front view

3. Remove drawers then apply silicone & hang the cabinet **(F)** on the brackets **(J)**.



## INSTALLATION

2. Connect wall brackets **(J)** to the wall.



### IMPORTANT:

CONSULT AN EXPERT FOR THE PROPER SCREWS/BOLTS TO USE WHEN ATTACHING TO VARIOUS WALL CONSTRUCTIONS. SCREWS PROVIDED **DO NOT ATTACH** TO ALL WALL CONSTRUCTION TYPES.

4. Attach faucet **(H)** to the sink **(E)** securing it with a rubber washer **(K)** and nut **(L)**. ( See illustration a.).

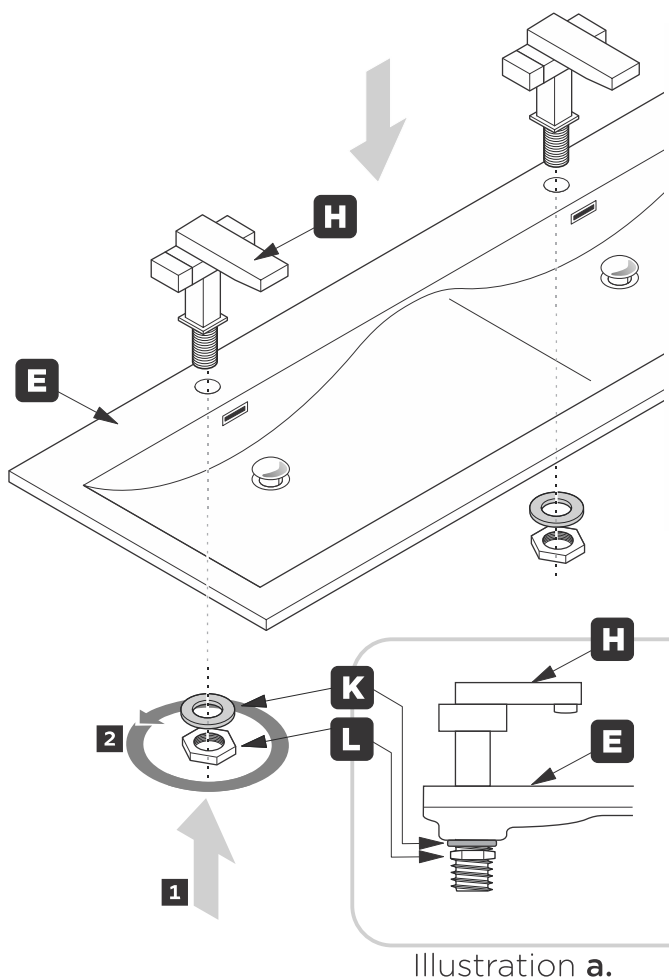


Illustration a.



FVN8512HA

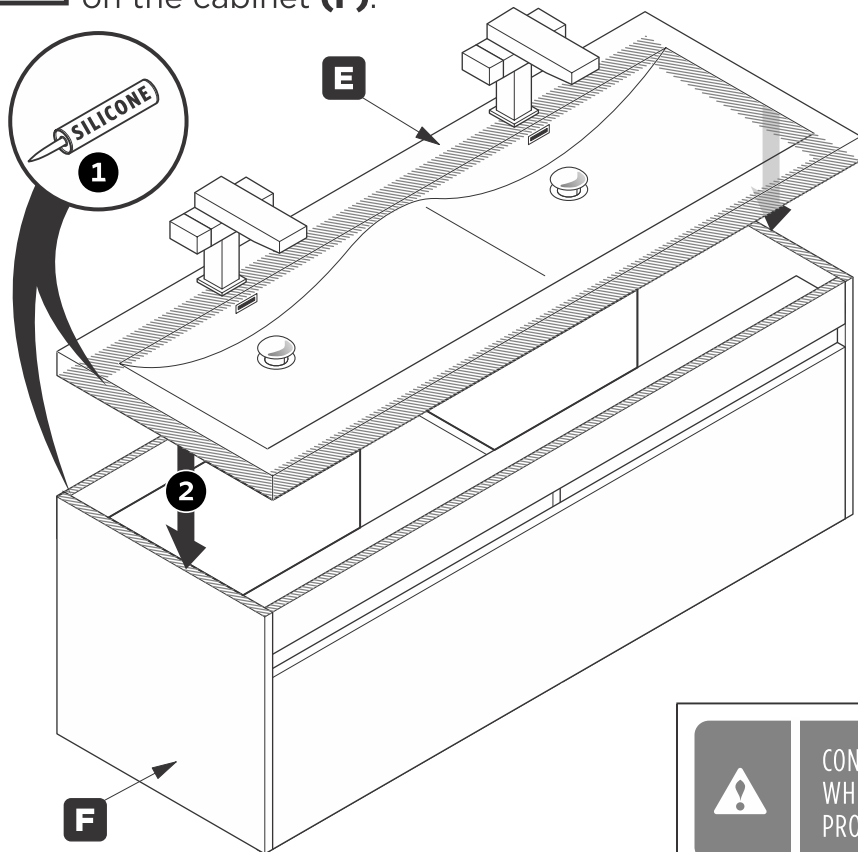
SIENA

INSTALLATION GUIDE

PAGE 2

# INSTALLATION

- 5.** Apply silicone & place sink **(E)** on the cabinet **(F)**.



- 6.** Hang mirror according to Illustration b. for center aligned installation.

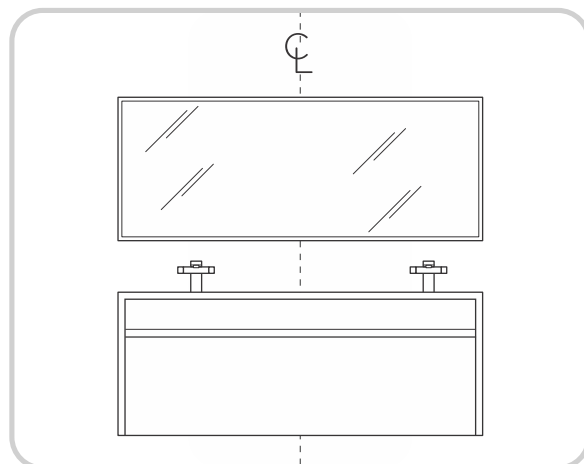
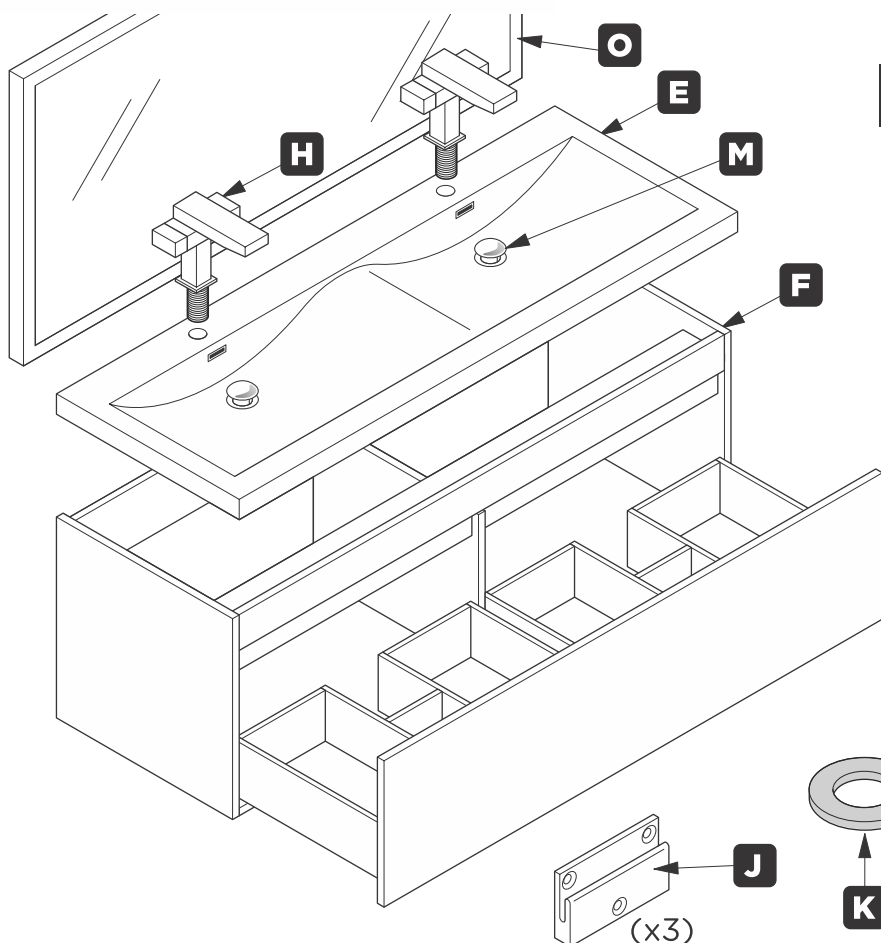


Illustration b.

\*See PAGE 4 for more information on mirror hanging instructions.

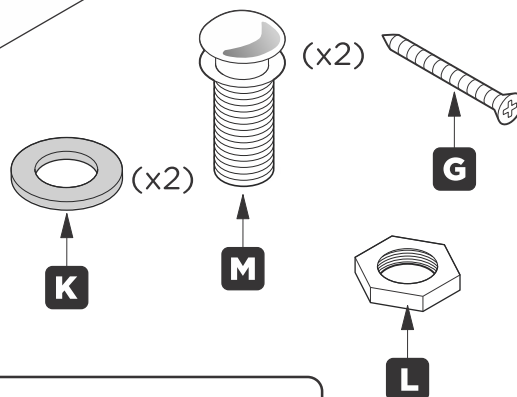


CONSULT AN EXPERT FOR THE PROPER SCREWS/BOLTS TO USE WHEN ATTACHING TO VARIOUS WALL CONSTRUCTIONS. SCREWS PROVIDED DO NOT ATTACH TO ALL WALL CONSTRUCTION TYPES.



## PARTS

- E** Sink
- F** Cabinet
- G** #8 Screw
- H** Faucet
- J** Wall bracket
- K** Washer
- L** Nut
- M** Pop up drain
- O** Mirror



FVN8512HA

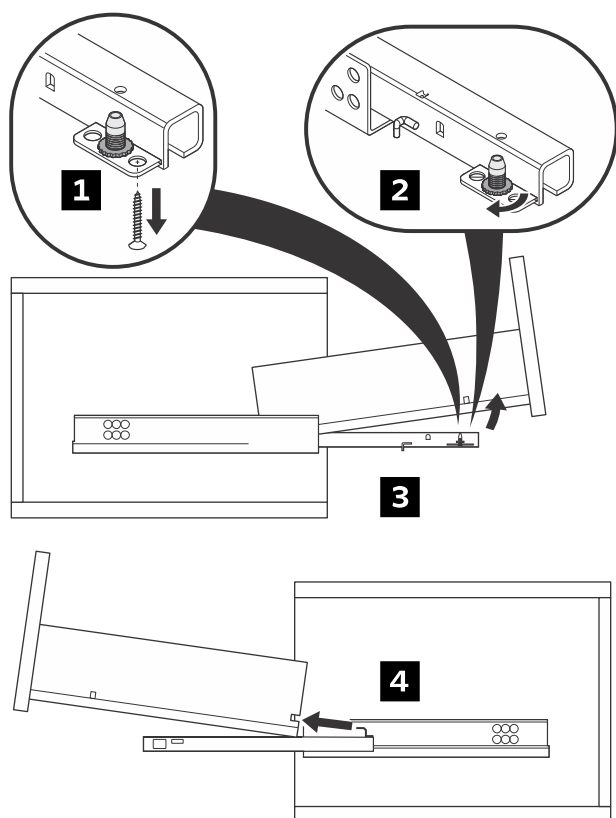
SIENA

INSTALLATION GUIDE

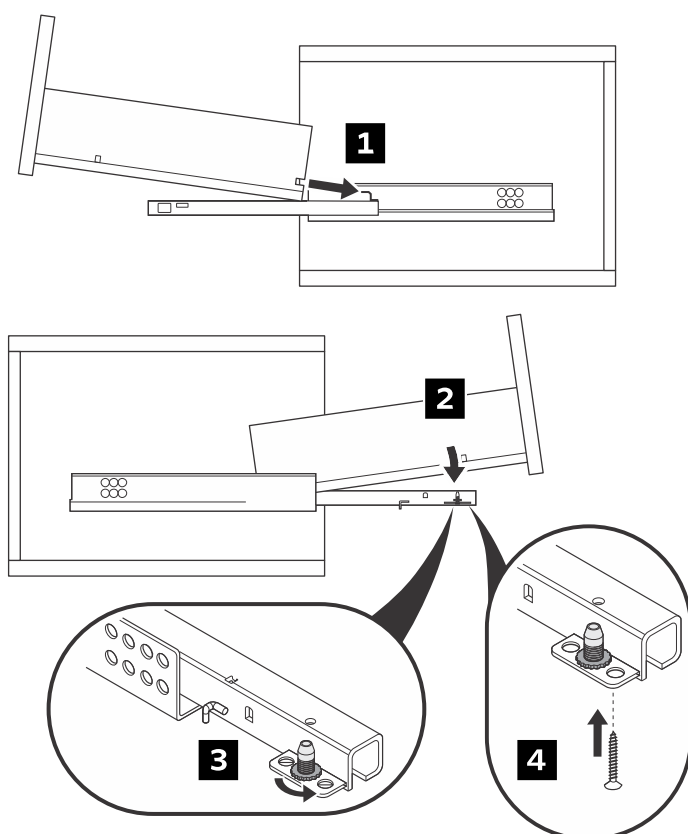
PAGE 3

## DRAWER REMOVAL & INSTALLATION

### REMOVAL



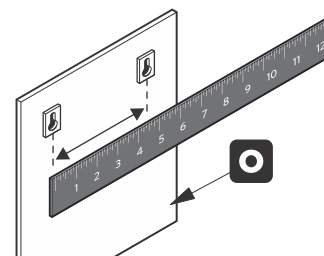
### INSTALLATION



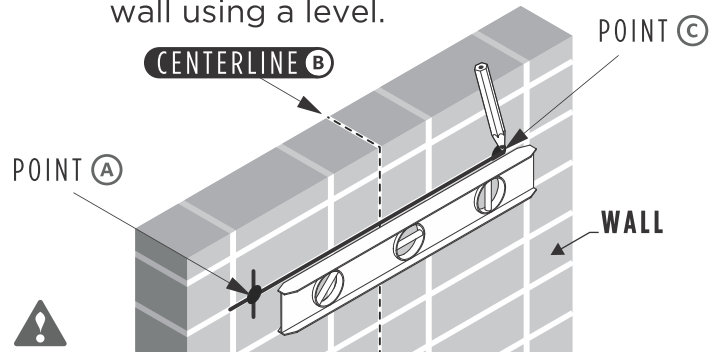
## MIRROR HANGING INSTRUCTIONS

1. Flip the mirror (O) over and measure the distance between the holes.

MIRROR  
back view



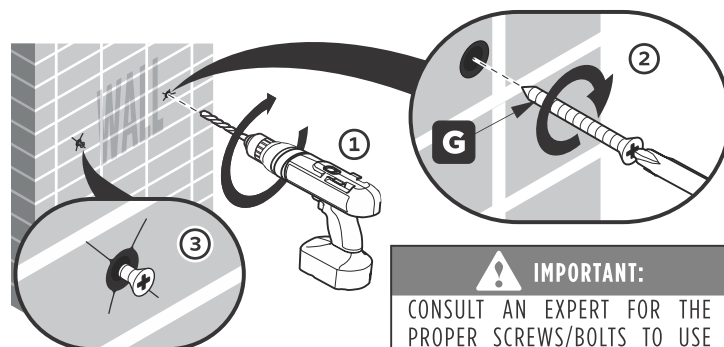
2. Mark the measured distance between point a. to point c. on the wall using a level.



**Note:**

The distance from (A) + (B) should be equal to (B) + (C).

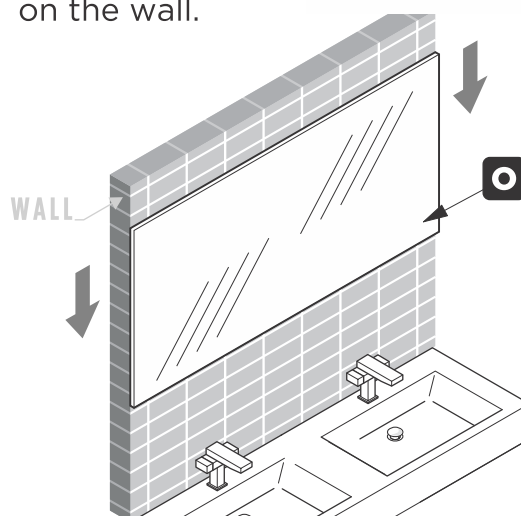
3. Once position is marked drill 2 holes and insert the screws (G).



#### IMPORTANT:

CONSULT AN EXPERT FOR THE PROPER SCREWS/BOLTS TO USE WHEN ATTACHING TO VARIOUS WALL CONSTRUCTIONS. SCREWS PROVIDED **DO NOT** ATTACH TO ALL WALL CONSTRUCTION TYPES.

4. Hang mirror (O) on the wall.



FVN8512HA

SIENA

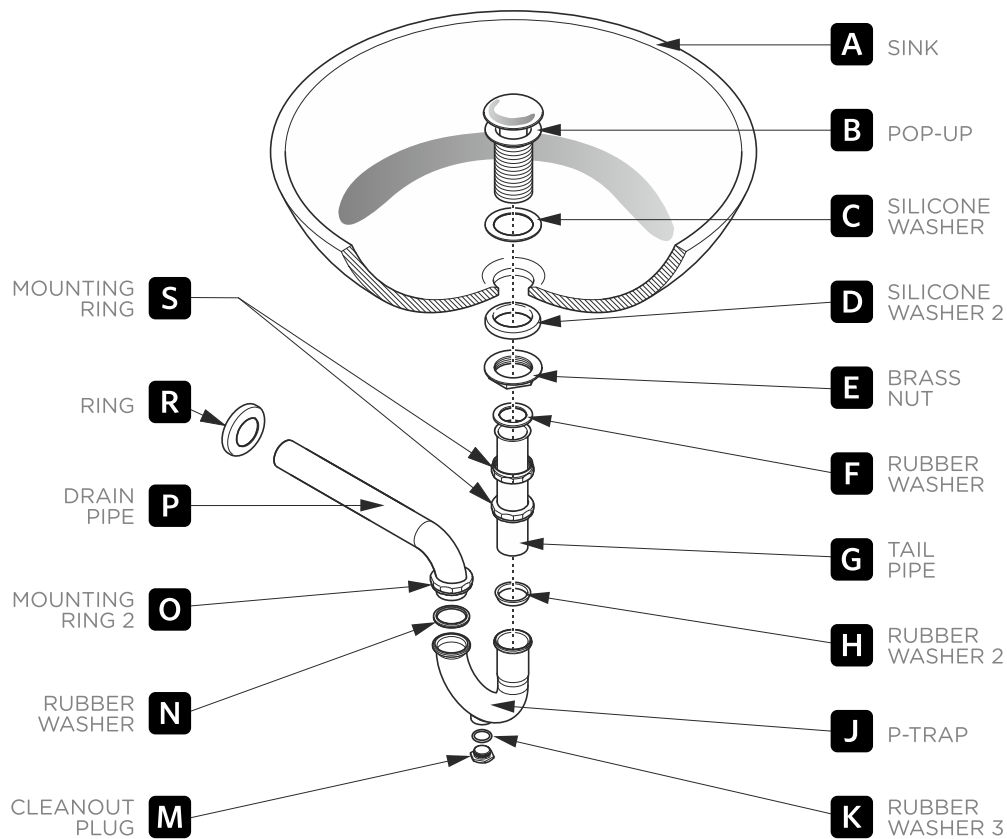
INSTALLATION GUIDE

PAGE 4

# P-TRAP & POP-UP

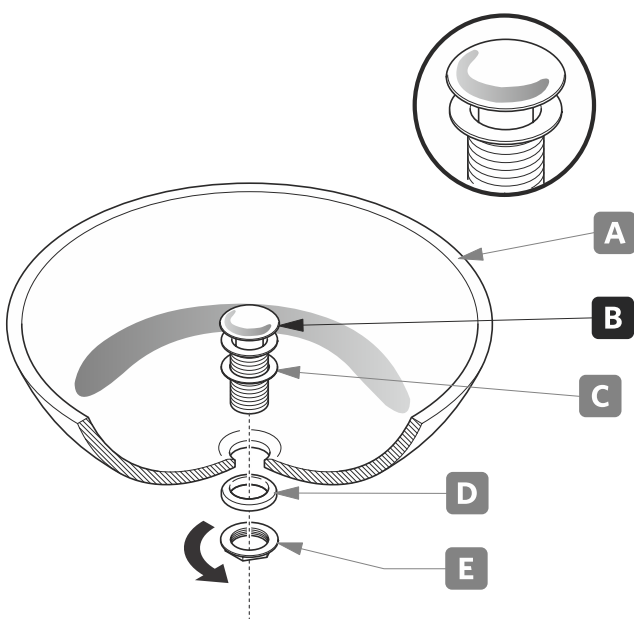
## INSTALLATION INSTRUCTIONS

YOUR ITEM MAY APPEAR SLIGHTLY DIFFERENT FROM THE ILLUSTRATION.



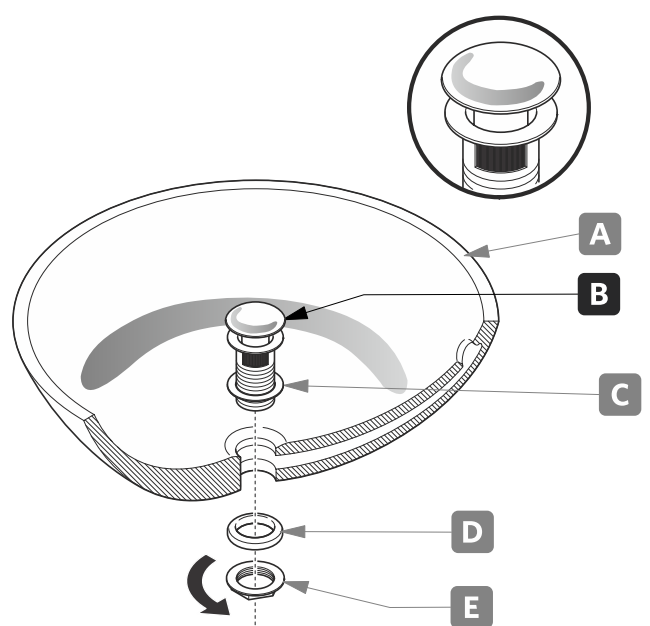
## POP-UP INSTALLATION

### FOR SINKS WITHOUT OVERFLOW



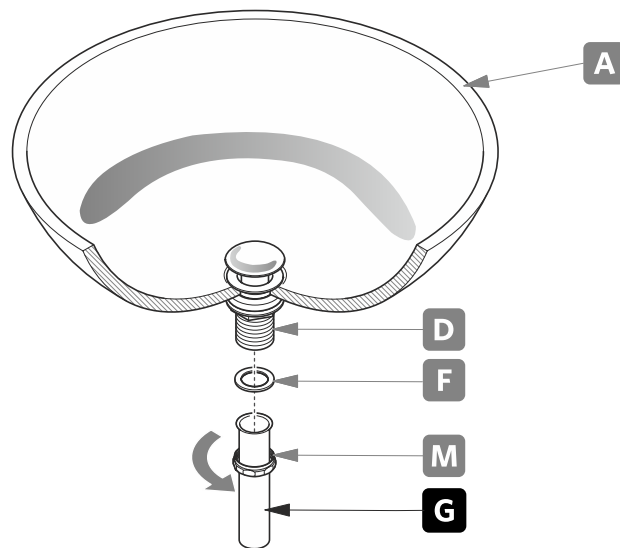
OR

### FOR SINKS WITH OVERFLOW



# P-TRAP INSTALLATION

1. Install tail pipe (G).



2. Install P-trap (J).

