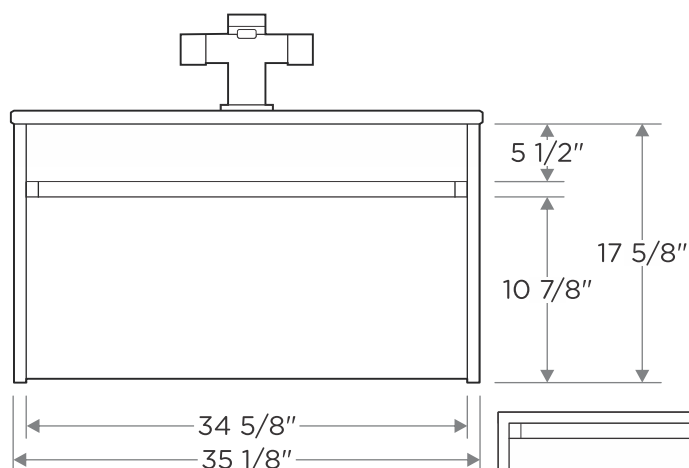
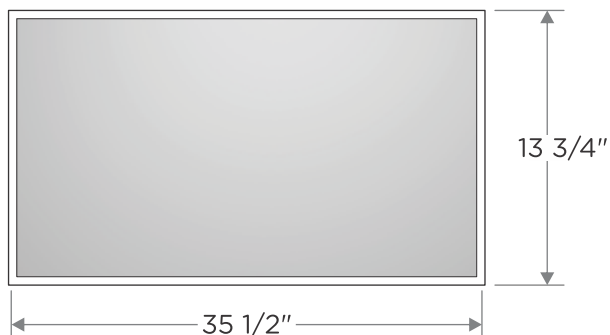


FVN8509HA SIENA INSTALLATION GUIDE

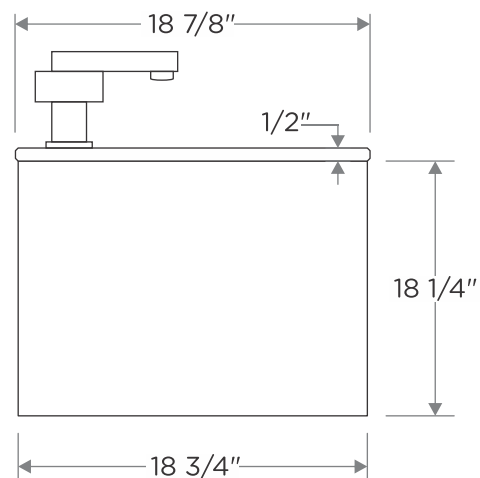


SPECIFICATION SHEET

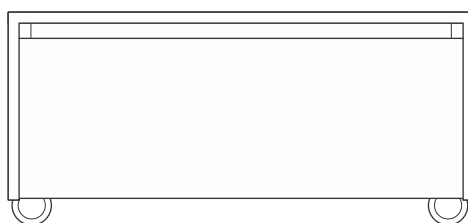
* \downarrow = 3/4"



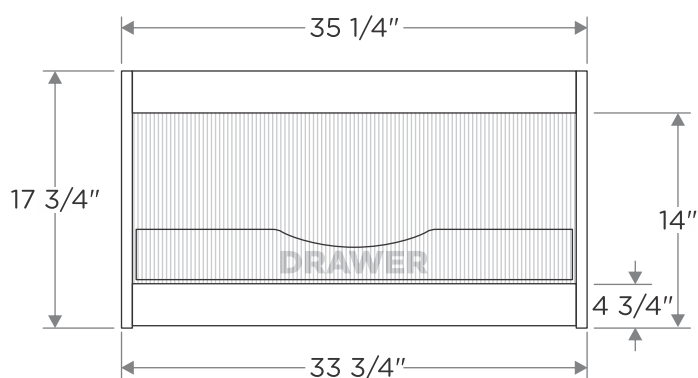
VANITY ENSEMBLE
front view



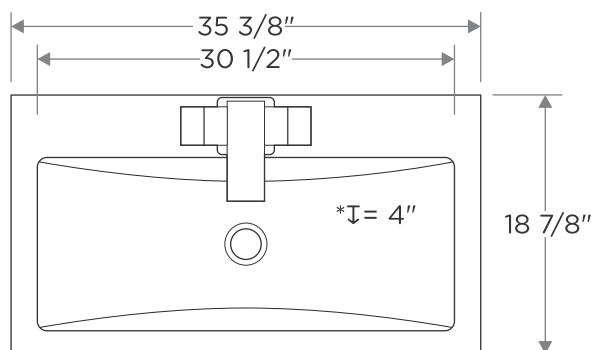
CABINET
side view



***OPTIONAL
SIDE CABINET**
front view



CABINET
back view



SINK
top view

*Side cabinet is not included in the set.

* \downarrow = depth



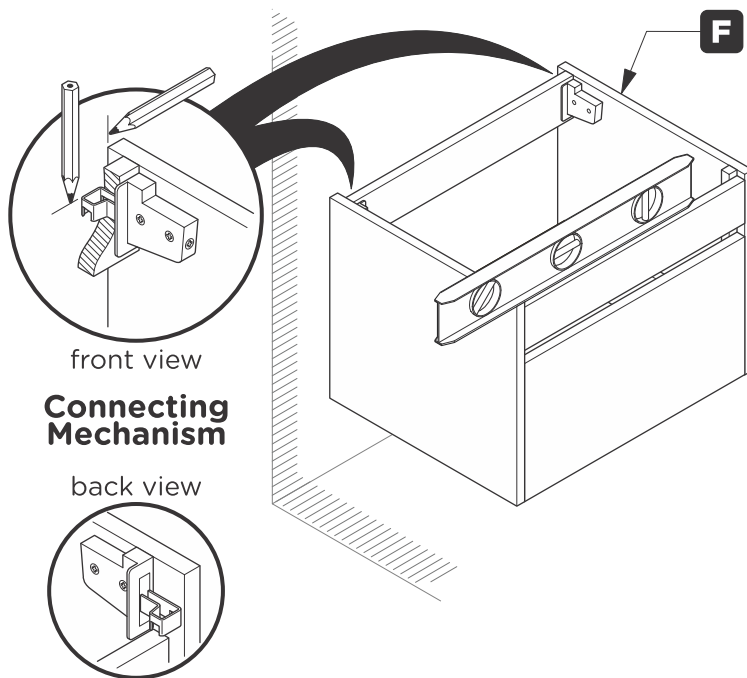
ALL DIMENSIONS & SPECIFICATIONS
ARE APPROXIMATE AND SUBJECT TO
CHANGE WITHOUT NOTICE.



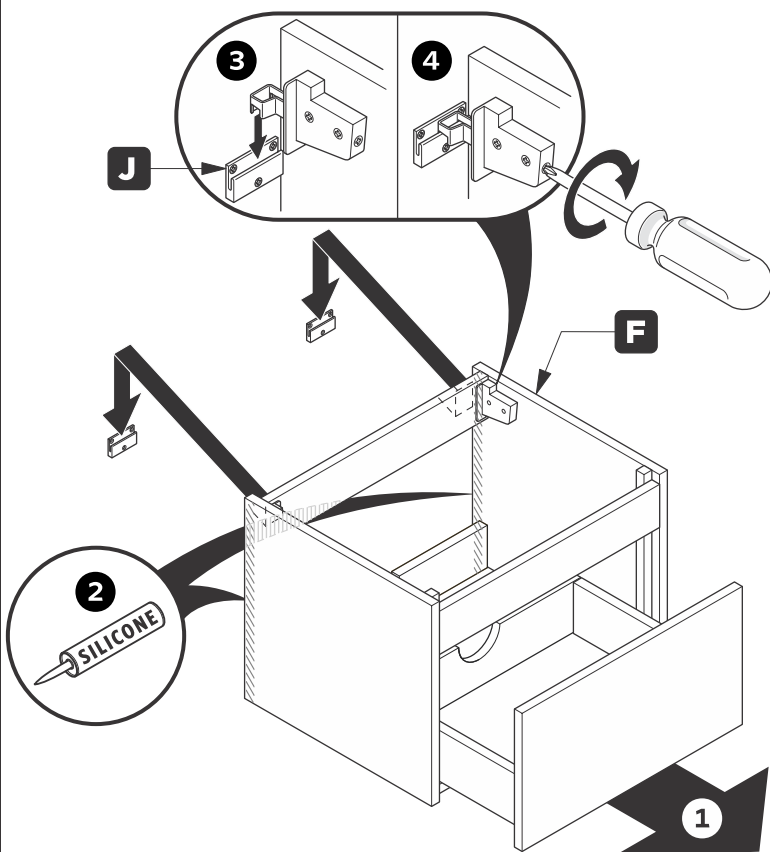
TOOLS FOR ASSEMBLY



1. Locate cabinet **(F)** & mark desired location using a level.

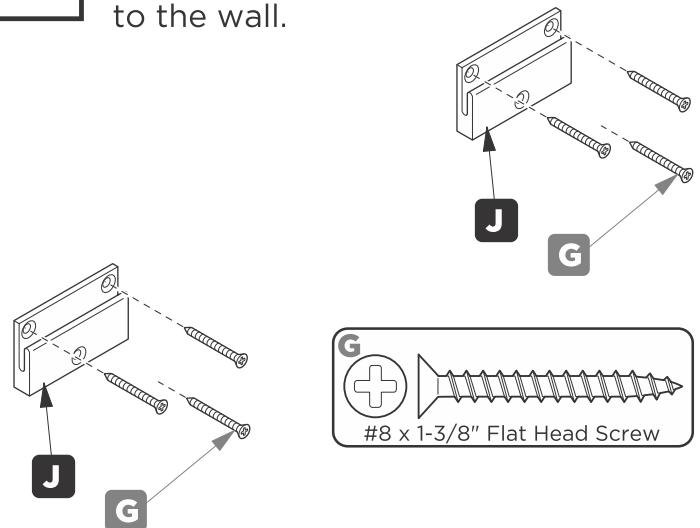


3. Remove drawer then apply silicone & hang the cabinet **(F)** on the brackets **(J)**.



INSTALLATION

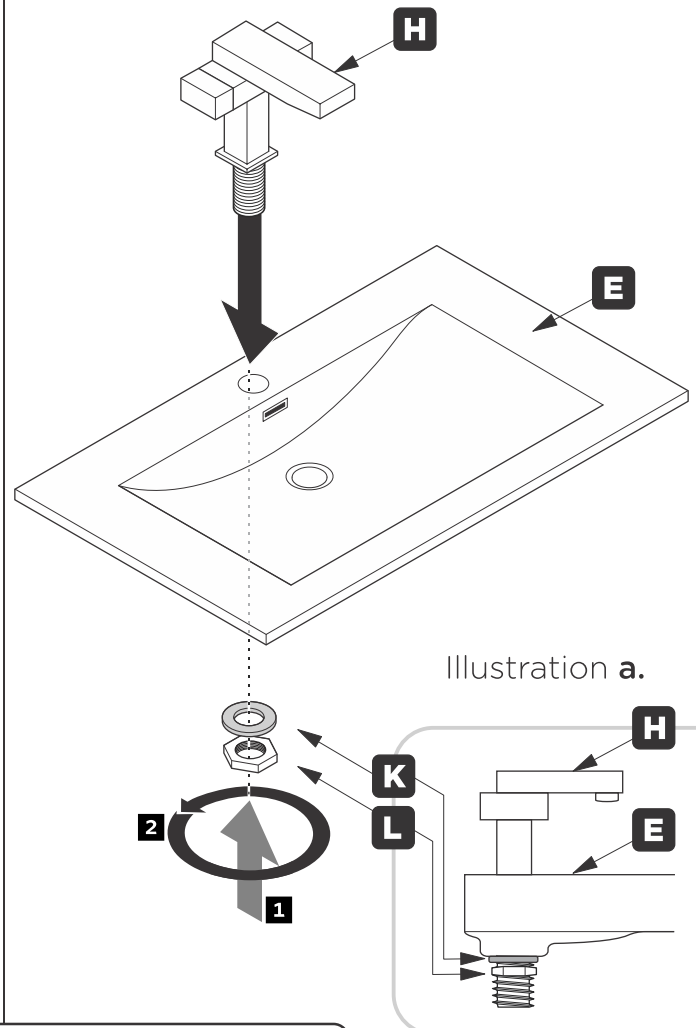
2. Connect wall brackets **(J)** to the wall.



IMPORTANT:

CONSULT AN EXPERT FOR THE PROPER SCREWS/BOLTS TO USE WHEN ATTACHING TO VARIOUS WALL CONSTRUCTIONS. SCREWS PROVIDED **DO NOT ATTACH** TO ALL WALL CONSTRUCTION TYPES.

4. Attach faucet **(H)** to the sink **(E)** securing it with a rubber washer **(K)** and nut **(L)**. (See illustration a.).



FVN8509HA

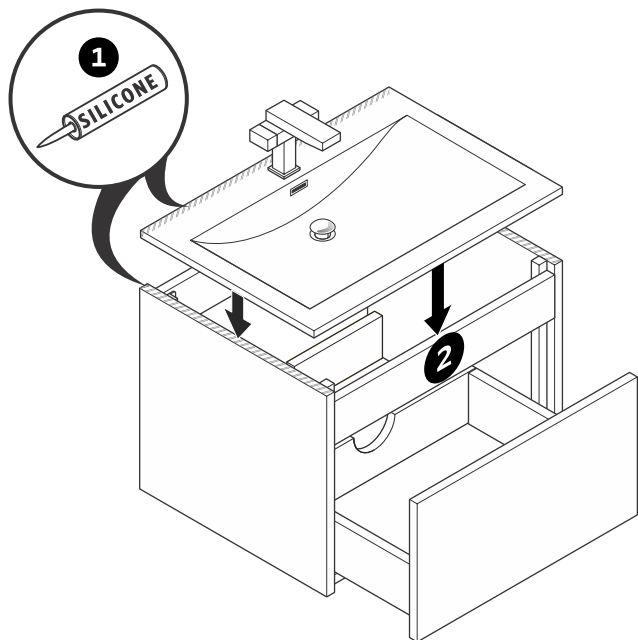
SIENA

INSTALLATION GUIDE

PAGE 2

INSTALLATION

- 5.** Apply silicone & place sink **(E)** on the cabinet **(F)**.



- 6.** Hang mirror according to Illustration **b.** for center aligned installation.

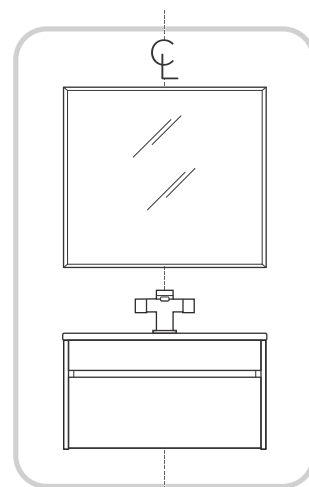
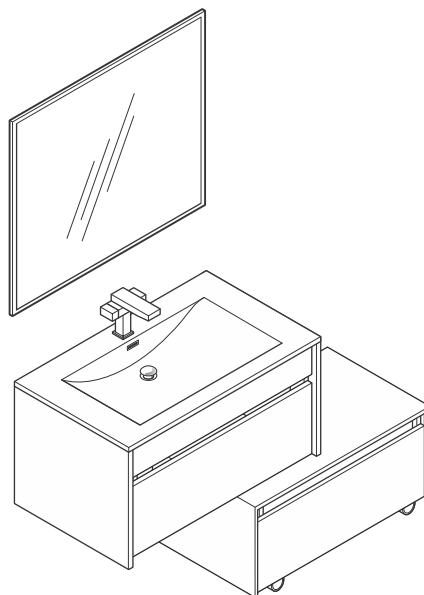
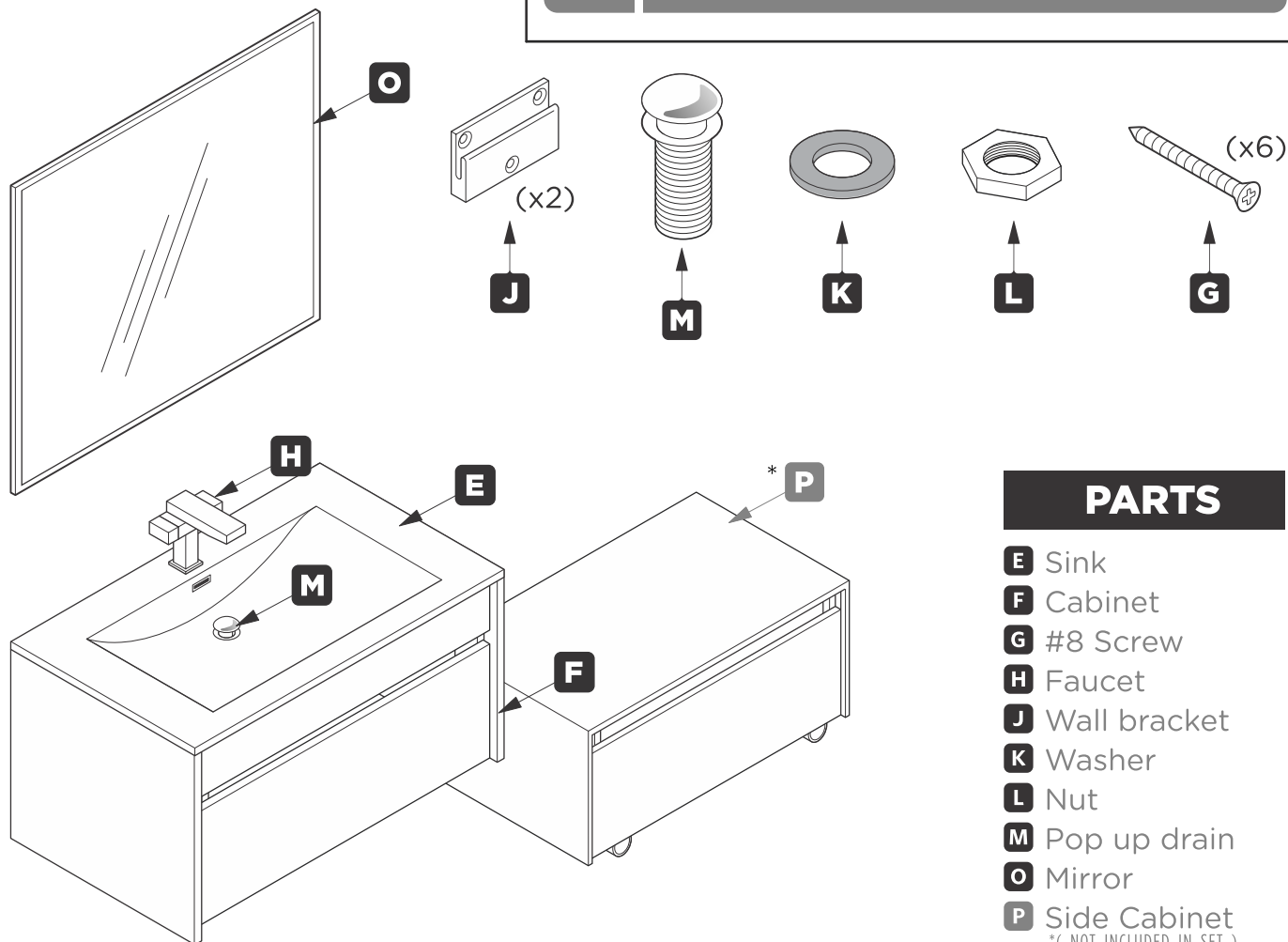


Illustration **b.**

*See PAGE 4 for more information on mirror installation.



CONSULT AN EXPERT FOR THE PROPER SCREWS/BOLTS TO USE WHEN ATTACHING TO VARIOUS WALL CONSTRUCTIONS. SCREWS PROVIDED DO NOT ATTACH TO ALL WALL CONSTRUCTION TYPES.



PARTS

- E** Sink
- F** Cabinet
- G** #8 Screw
- H** Faucet
- J** Wall bracket
- K** Washer
- L** Nut
- M** Pop up drain
- O** Mirror
- P** Side Cabinet

*(NOT INCLUDED IN SET)



FVN8509HA

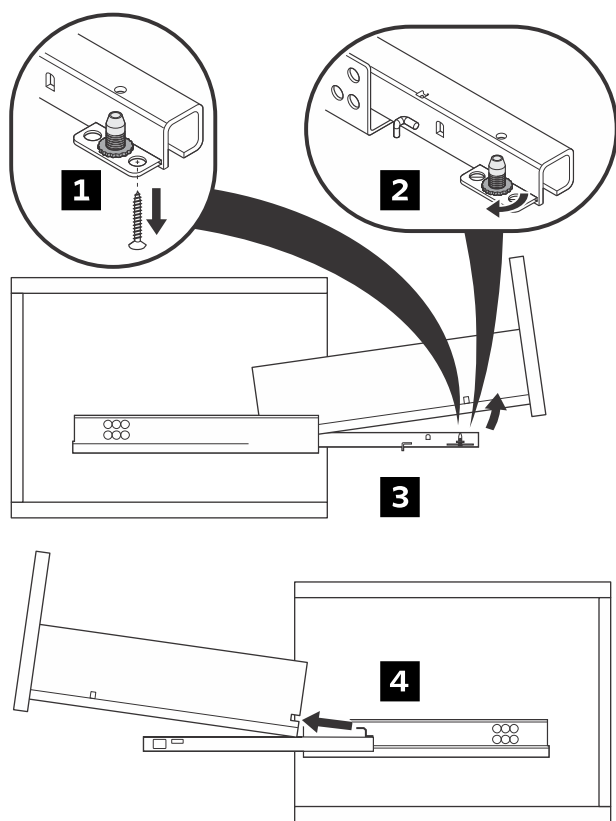
SIENA

INSTALLATION GUIDE

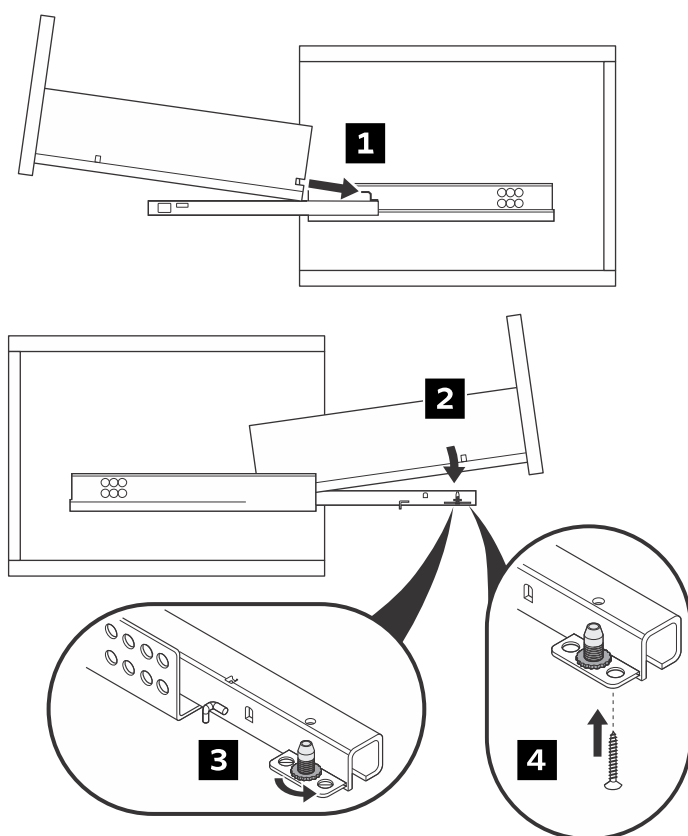
PAGE 3

DRAWER REMOVAL & INSTALLATION

REMOVAL

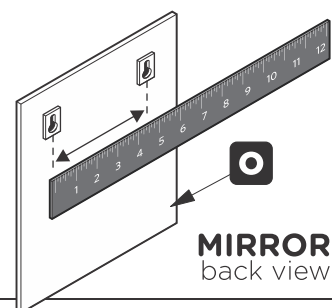


INSTALLATION

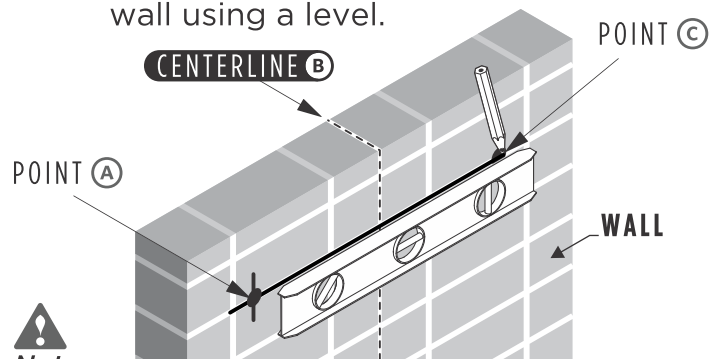


MIRROR HANGING INSTRUCTIONS

1. Flip the mirror (O) over and measure the distance between the holes.



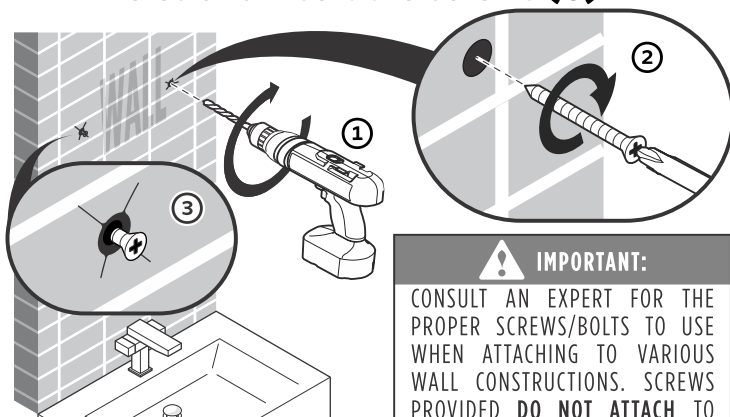
2. Mark the measured distance between point a. to point c. on the wall using a level.



Note:

The distance from A + B should be equal to B + C.

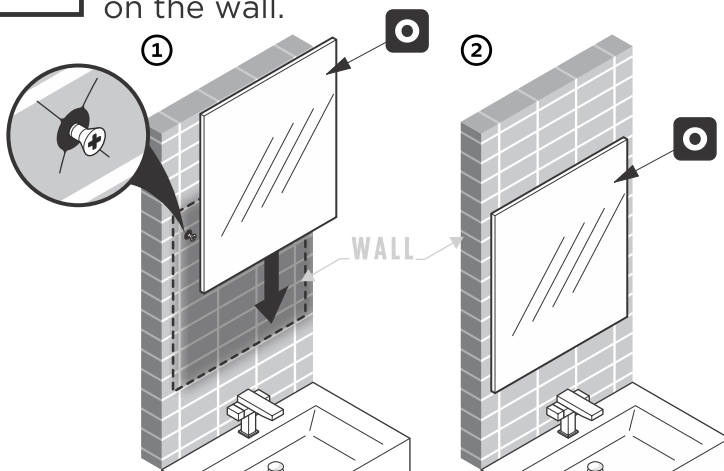
3. Once position is marked drill 2 holes and insert the screws (G).



IMPORTANT:

CONSULT AN EXPERT FOR THE PROPER SCREWS/BOLTS TO USE WHEN ATTACHING TO VARIOUS WALL CONSTRUCTIONS. SCREWS PROVIDED **DO NOT** ATTACH TO ALL WALL CONSTRUCTION TYPES.

4. Hang mirror (O) on the wall.



FVN8509HA

SIENA

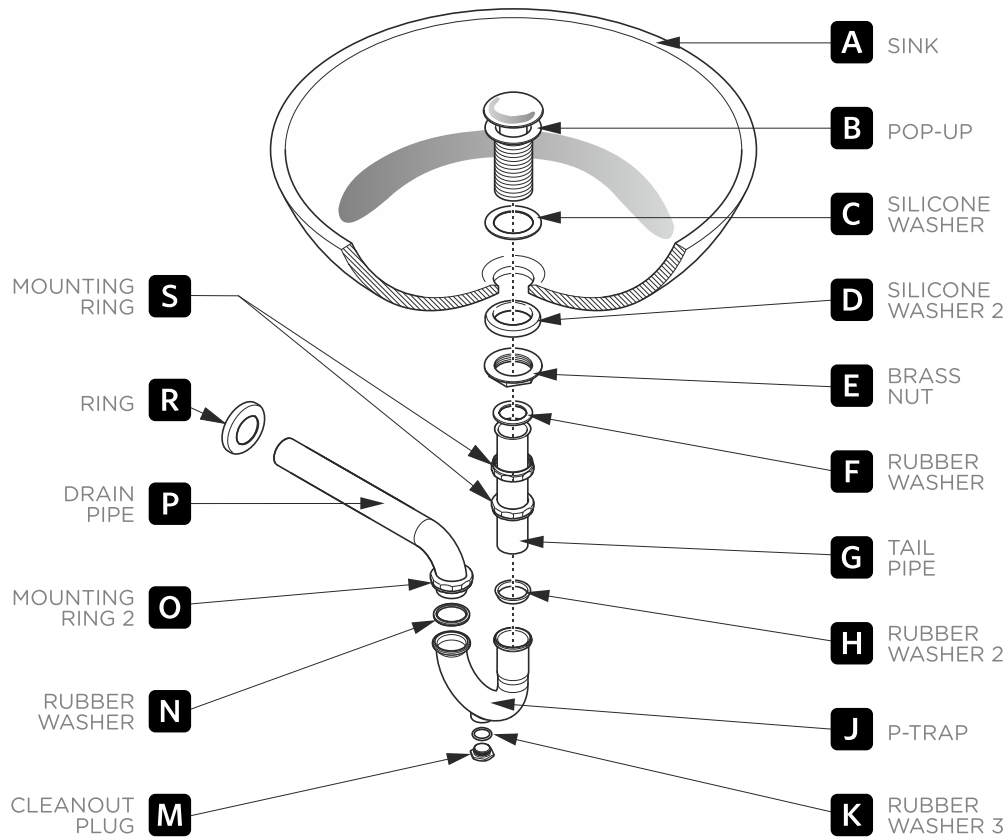
INSTALLATION GUIDE

PAGE 4

P-TRAP & POP-UP

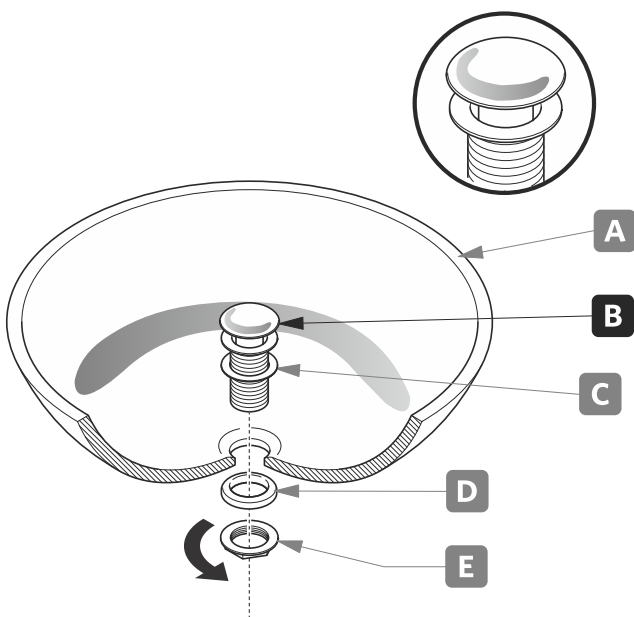
INSTALLATION INSTRUCTIONS

YOUR ITEM MAY APPEAR SLIGHTLY DIFFERENT FROM THE ILLUSTRATION.



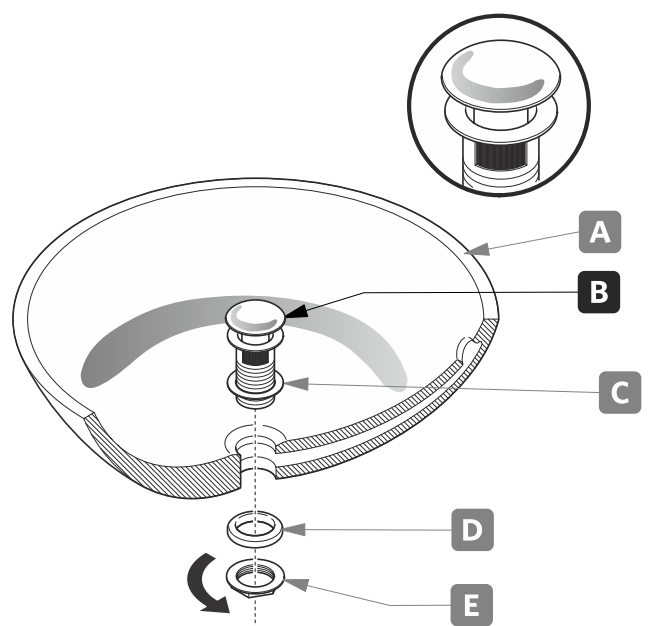
POP-UP INSTALLATION

FOR SINKS WITHOUT OVERFLOW



OR

FOR SINKS WITH OVERFLOW



FVN8509HA

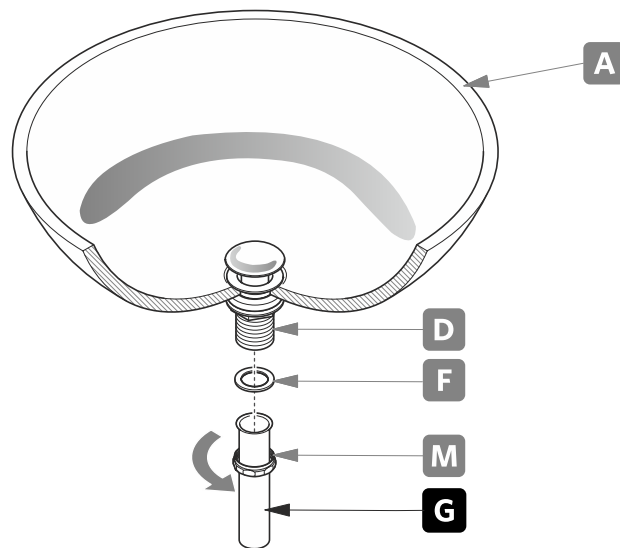
SIENA

INSTALLATION GUIDE

PAGE 5

P-TRAP INSTALLATION

1. Install tail pipe **(G)**.



2. Install P-trap **(J)**.

