

SPECIFICATIONS




Features/Benefits

- Includes Treysta™ Pressure Balance Ceramic Disc Cartridge
- Requires Treysta™ Rough-In Valve, G00GS500 Series (Horizontal Inputs) or G00GS520 Series (Vertical Inputs)
- Showerhead Sold Separately
- Accommodates Standard, Back-to-Back, and Thin Wall Installations



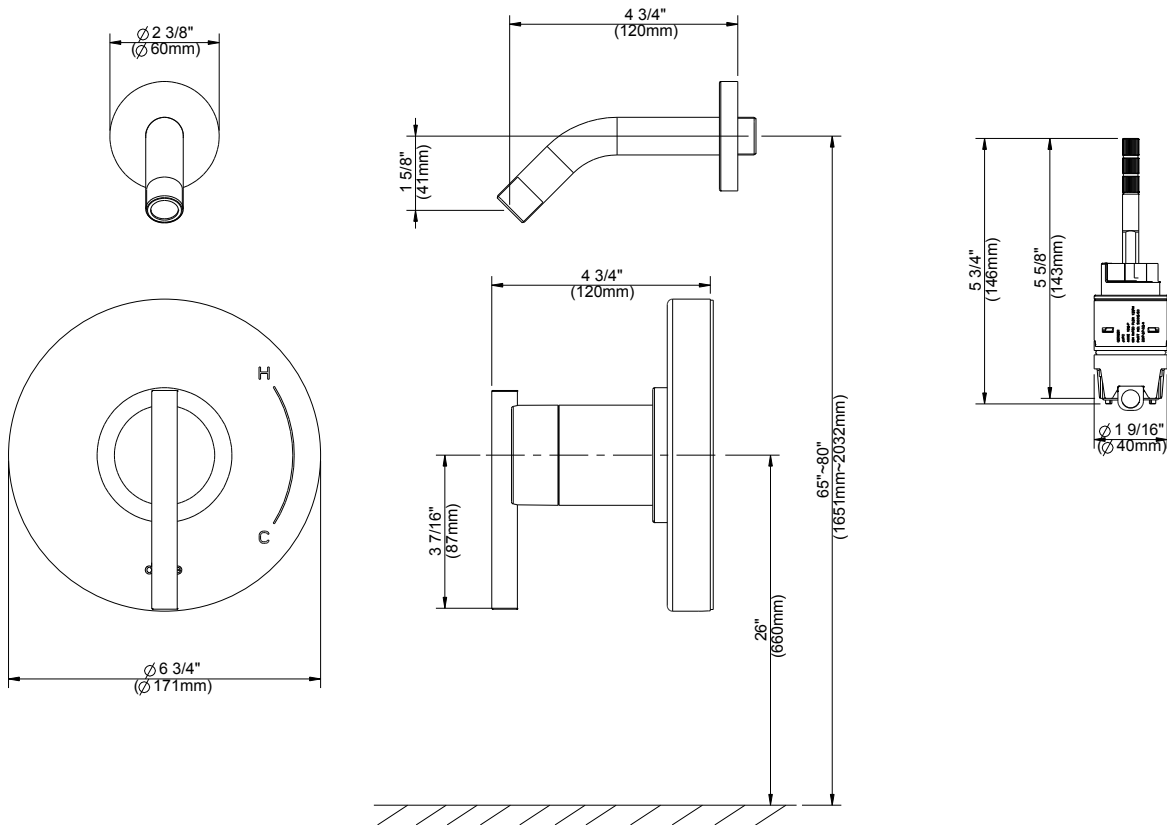
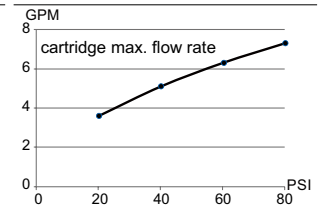
Available Color/Finishes

Color	Description
	Chrome
Please see danze.com or current price list for available finishes. Finish is defined by additional suffix.	

Standards & Certifications



Flow Rate



Submittal Information:

Name: _____ Contractor: _____
Location: _____ Contact #: _____