


## SPECIFICATIONS

### Features/Benefits

- Ceramic Disc Cartridge
- 9 3/8" High Swivel Spout, 5" Spout Length
- Metal Touch Down Drain Assembly
- Single Hole Mount
- 1.2 gpm (4.5 L/min) Maximum Flow Rate @60 psi

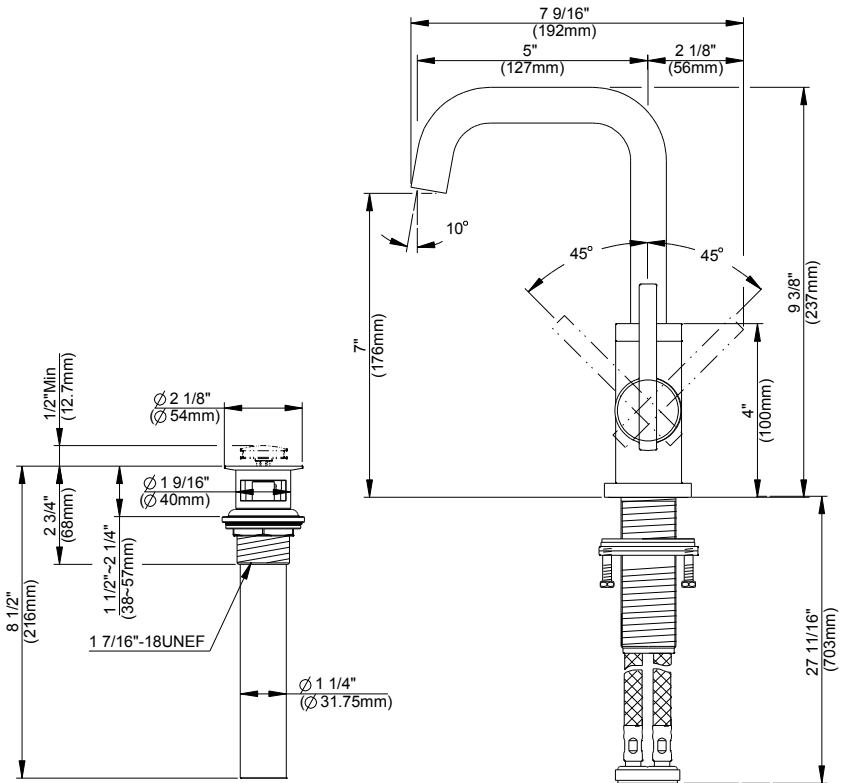
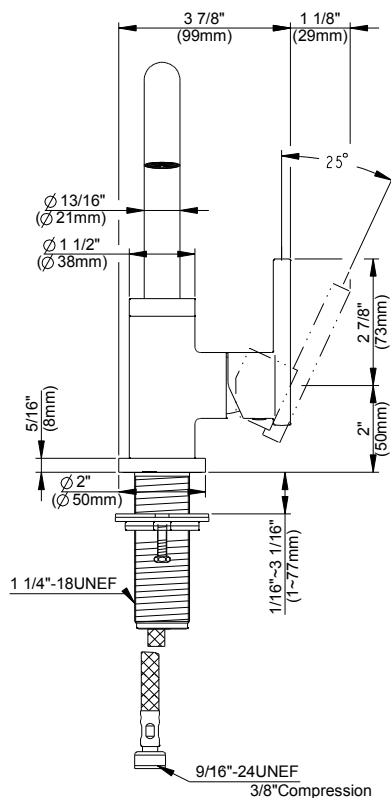


### Available Color/Finishes

Color	Description
	Chrome

Please see [danze.com](http://danze.com) or current price list for available finishes.  
Finish is defined by additional suffix.

### Standards & Certifications



### Submittal Information:

Name: \_\_\_\_\_  
Location: \_\_\_\_\_

Contractor: \_\_\_\_\_  
Contact #: \_\_\_\_\_