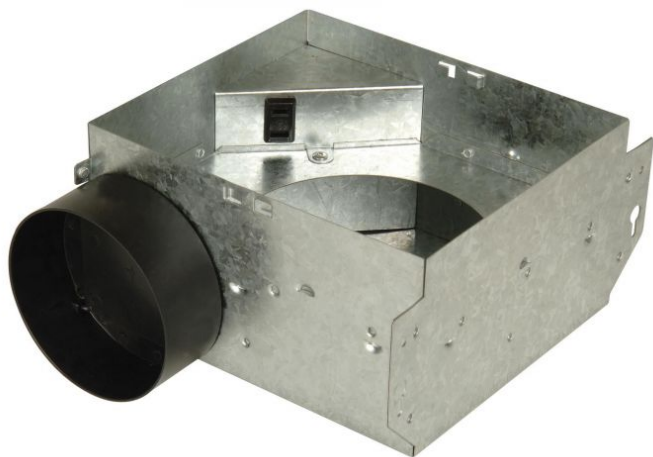


Ventilation Fans - TFV50B-H

50 CFM Bath Vent Housing Only (6 pack)

50 CFM Bath Vent Housing Only with 3' & 4' Adapters Included (6 pack)



- Easy Removal and Installation of Motor Assembly
Key-Hole Mounting
- Permanently Lubricated Motor
- Precision-Balanced Impellor for Quiet Operation
- Galvanized for Humid Conditions and Various Attic Temperatures
- Gauge Markings for Ceiling Thickness

Specs

Vent Fan CFM	50
Carton Size (CU FT)	1.18
Finish	Designer White

Dimensions

Trim Dimensions (in.)	2.0 (Depth)
Height (in.)	26.25
Width (in.)	9.50

Downloads

Ventilation Fans - TFV50B-H

 [PDF Tear Sheet](#)

