



Model: 47316C – 40911 – 40914 – 40916 – 40077

**Flagstone™**



UPC®

NSF 61/9



## Trims for Pressure Balancing Cycling In-Wall Valve

### DESCRIPTION

- Metal construction with chrome plated finish
- Model 47316C -Valve only trim includes acrylic knob style handle & escutcheon
- Model 40911 -Slip fit metal tub spout
- Model 40914 -IPS metal tub spout
- Model 40916 -Showerhead, arm, flange kit
- Model 40077 -Showerhead, locking shower arm, flange kit
- Twelve (12) individual boxes per master carton

### OPERATION

- Acrylic knob style handle
- Temperature control by 150° arc
- Will operate with less than 5 lbs of torque
- Protective rubber gasket surrounds exterior rim
- Weep hole located at bottom of escutcheon
- Slip fit tub spout connects to 1/2" pipe with bottom 5/32" set screw
- IPS tub spout connects to 1/2" mips pipe

### IN-WALL VALVE SOLD SEPARATELY

- 45311 Pressure balancing cycling in-wall valve with stops
- 45312 Pressure balancing cycle in-wall valve

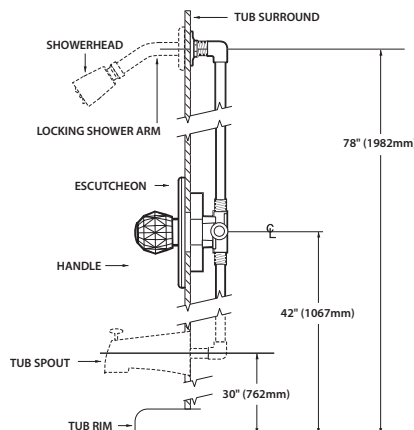
### STANDARDS

- Third party certified to CSA B125, ASME A112.18.1, IAPMO, and all applicable requirements referenced therein, California Proposition 65, Illinois, Massachusetts, and Texas
- All CFG products are compliant to all plumbing codes that require 3rd party certification to the applicable plumbing/fitting standards
- Features red/blue hot/cold temperature indicators

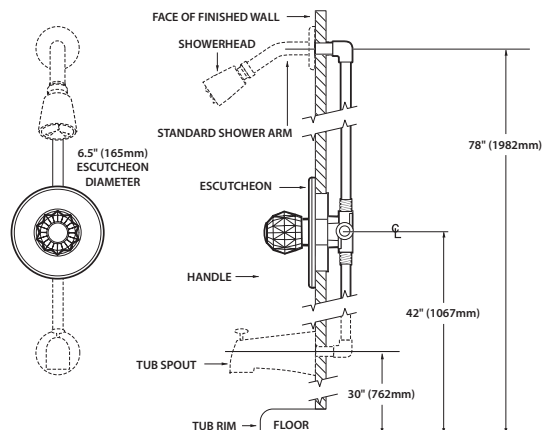
### WARRANTY — RESIDENTIAL, COMMERCIAL

- One (1) year limited warranty against defects in materials and manufacturing workmanship
- Refer to the installation instructions enclosed with each CFG product or call 1-888-450-4910 for complete warranty information

### CRITICAL DIMENSIONS



THIN WALL



THICK WALL