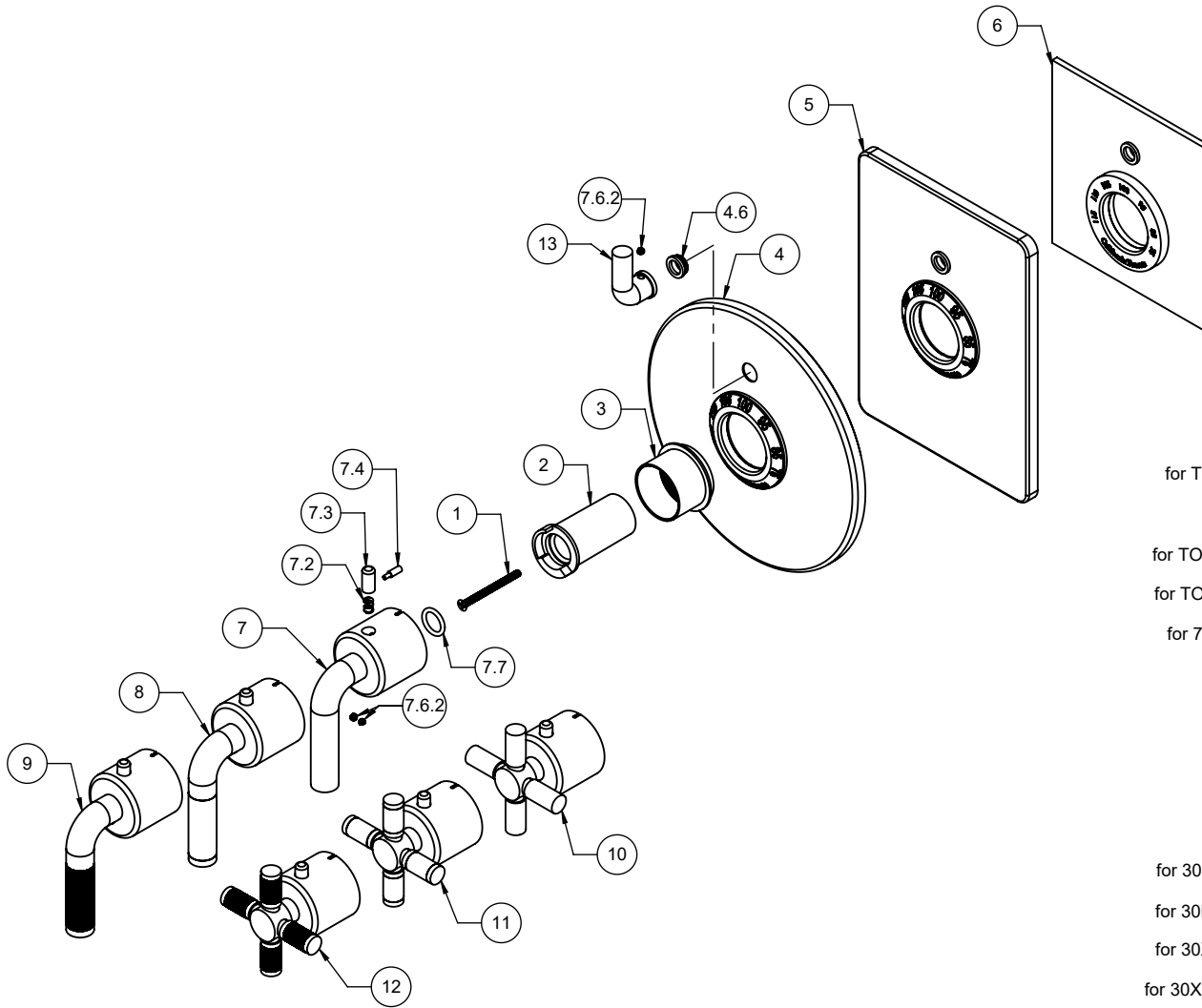


| | | |
|---------------|---------------|--------------|
| TO-THF1L-74 | TO-THC1L-74 | TO-TH1L-74 |
| TO-THF1L-30F | TO-THC1L-30F | TO-TH1L-30F |
| TO-THF1L-30K | TO-THC1L-30K | TO-TH1L-30K |
| TO-THF1L-30X | TO-THC1L-30X | TO-TH1L-30X |
| TO-THF1L-30XF | TO-THC1L-30XF | TO-TH1L-30XF |
| TO-THF1L-30XK | TO-THC1L-30XK | TO-TH1L-30XK |



To order spare parts add and/or replace as stated below:

SPD- prefix added to part number(s)
-ZZ replaced with finish code (see finish table)
-WW replaced with **-90** (light finish) or **-96** (dark finish)

Ex: **SPD-7-100278-PC** or **SPD-86030-96**

| ITEM | PART NO. | DESCRIPTION | QTY. |
|-----------------|----------|---|------|
| 1 | 86255-90 | SCREW M4 X 0.7 X 50MM PH FLT HD SS | 1 |
| 2 | 10092-81 | STOP, THERM TEMP, SHORT | 1 |
| 3 | 10090-ZZ | SLEEVE, THERMO MOUNTING | 1 |
| for TO-TH1L | 4 | 7-100041-ZZ ASM, SHWRPLATE, CONT RD, THERM W/1VC (incl. 4.6) | 1 |
| | 4.6 | 223467-99 NYLON BUSHING FOR PBS FACEPLATE | 1 |
| for TO-THC1L | 5 | 7-100047-ZZ ASM, SHOWERPLATE, CONT SQ, THERM W/1VC (incl. 4.6) | 1 |
| for TO-THF1L | 6 | 7-100239-ZZ ASM, SHWRPLATE, CONT FLAT, THERM W/1 VC (incl. 4.6) | 1 |
| for 74 series | 7 | TH-H-74-ZZ THERM HANDLE KIT (incl. 7.2, 7.3, 7.4, 7.6.2, 7.7) | 1 |
| | 7.2 | 10098-99 SPRING, Ø.24 X .312 LG, 1.4 LB/IN | 1 |
| | 7.3 | 10093-81 BUTTON, BLACK THERM | 1 |
| | 7.4 | 10062-98 PIN, THERMO BONNET | 1 |
| | 7.6.2 | 86030-WW SETSCREW 8-32 X 1/8 SCKT HD CUP PT SS | 2 |
| | 7.7 | 87222-80 O-RING Ø13.94 X 2.62 (-113) EPDM A70 (NSF61-12 & WRAS) | 1 |
| for 30F series | 8 | TH-H-30F-ZZ THERM HANDLE KIT (incl. 7.2, 7.3, 7.4, 7.6.2, 7.7) | 1 |
| for 30K series | 9 | TH-H-30K-ZZ THERM HANDLE KIT (incl. 7.2, 7.3, 7.4, 7.6.2, 7.7) | 1 |
| for 30X series | 10 | TH-H-30X-ZZ THERM HANDLE KIT (incl. 7.2, 7.3, 7.4, 7.6.2, 7.7) | 1 |
| for 30XF series | 11 | TH-H-30XF-ZZ THERM HANDLE KIT (incl. 7.2, 7.3, 7.4, 7.6.2, 7.7) | 1 |
| for 30XK series | 12 | TH-H-30XK-ZZ THERM HANDLE KIT (incl. 7.2, 7.3, 7.4, 7.6.2, 7.7) | 1 |
| | 13 | 7-100181-ZZ ASM, THERM VC - MODERN (incl. 7.6.2) | 1 |
| for ITEM 7.6.2 | 14 | 882042-99 KEY, ALLEN, 5/64", BLACK | 1 |