



California Faucets®

**Corsano®**

Single Handle Combo Hot & Cold Water Dispenser

## Features

- 25+ artisan finishes including 12 PVD finishes
- All brass construction
- Insulated to reduce heat to faucet
- Self-Closing for hot water
- Max flow rate: 1.0 gpm (3.8 L/min)
- **Not** compatible with RO filter units
- Requires Hot Water Tank (9628SS) sold separately

## Codes/Standards Applicable

Product meets or exceeds the following:

- ASME A112.18.1/CSA B125.1
- NSF 61, NSF 372, CEC, & DOE
- Commonwealth of MA
- ADA compliant



(9623-K51-ST shown)

9623-K51-XX

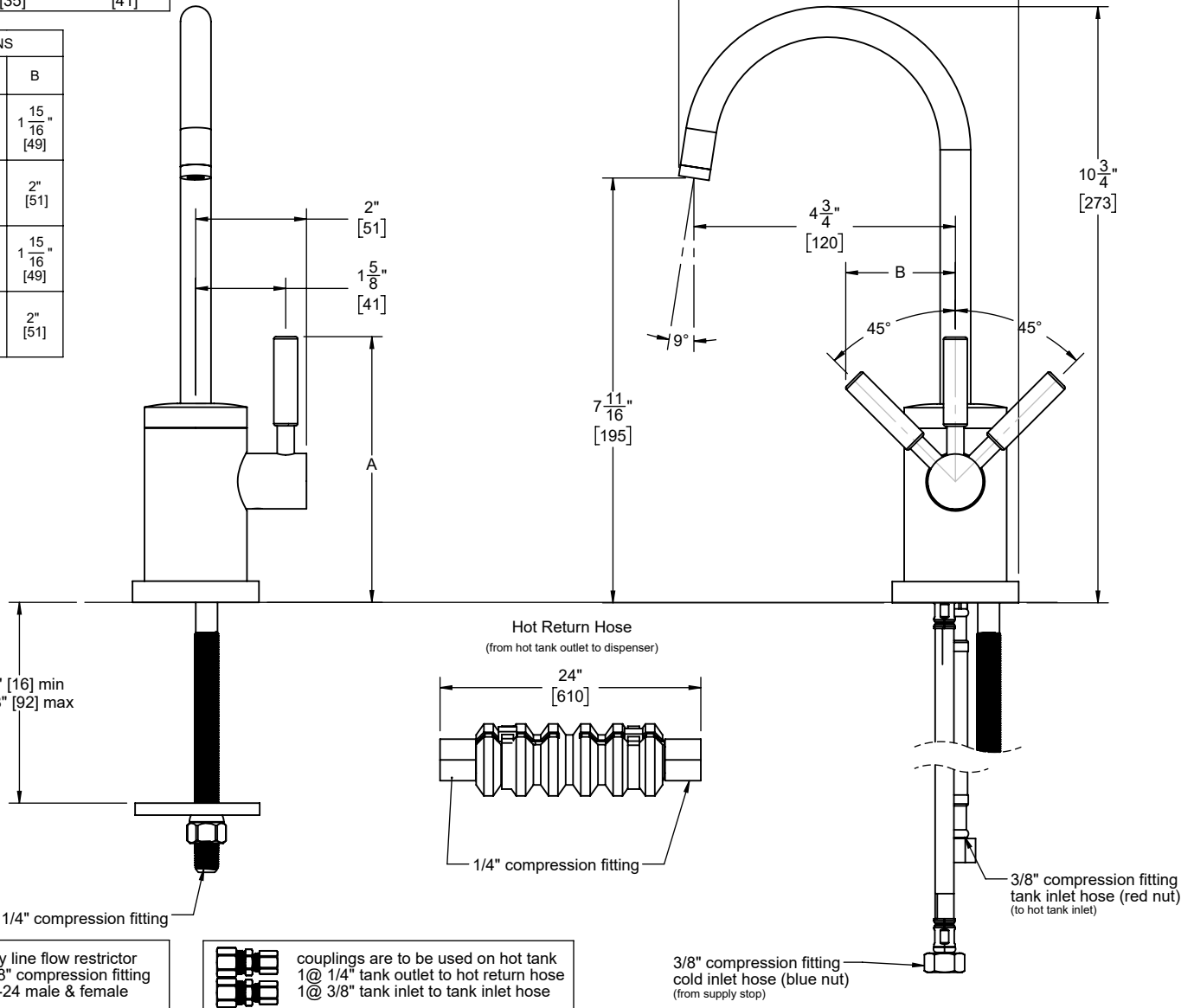


XX = Denotes handle shown

### Through-Hole Specifications

Min Ø1-1/4" [32]	Recommended Ø1-3/8" [35]	Max Ø1-5/8" [41]
------------------------	--------------------------------	------------------------

DIMENSIONS		
XX HANDLE	A	B
FB	4 <sup>13</sup> / <sub>16</sub> " [122]	1 <sup>15</sup> / <sub>16</sub> " [49]
ST	4 <sup>3</sup> / <sub>4</sub> " [121]	2" [51]
BFB	4 <sup>13</sup> / <sub>16</sub> " [122]	1 <sup>15</sup> / <sub>16</sub> " [49]
BST	4 <sup>3</sup> / <sub>4</sub> " [121]	2" [51]



Specifications subject to change without notice

Dimensions are inches, rounded to 1/16"  
[Dimensions in brackets are mm, rounded to 1mm]