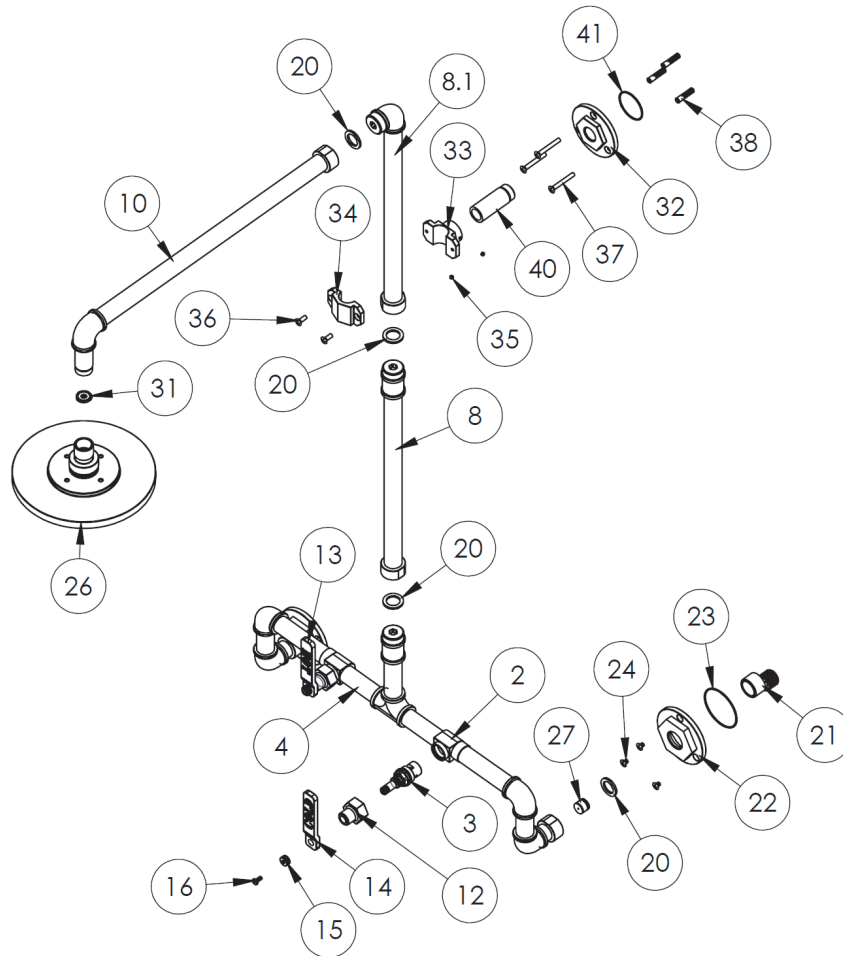


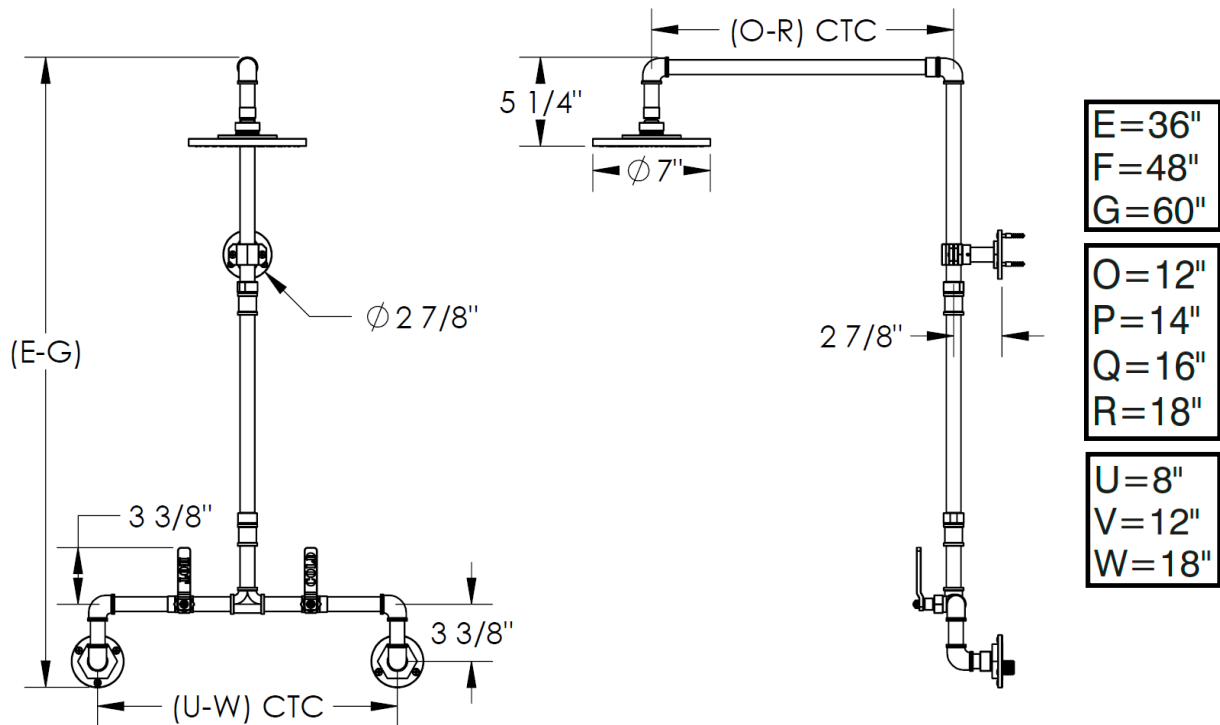
FEATURES

- Shower flow rate: 2 gpm
- Some systems may require a remote pressure balance valve
- Warranty:
 - Limited lifetime warranty (residential use)
 - One year (commercial use)
- Solid Brass Construction
- Standard finishes:
 - polished chrome
 - satin nickel
 - polished nickel
 - rustic brass

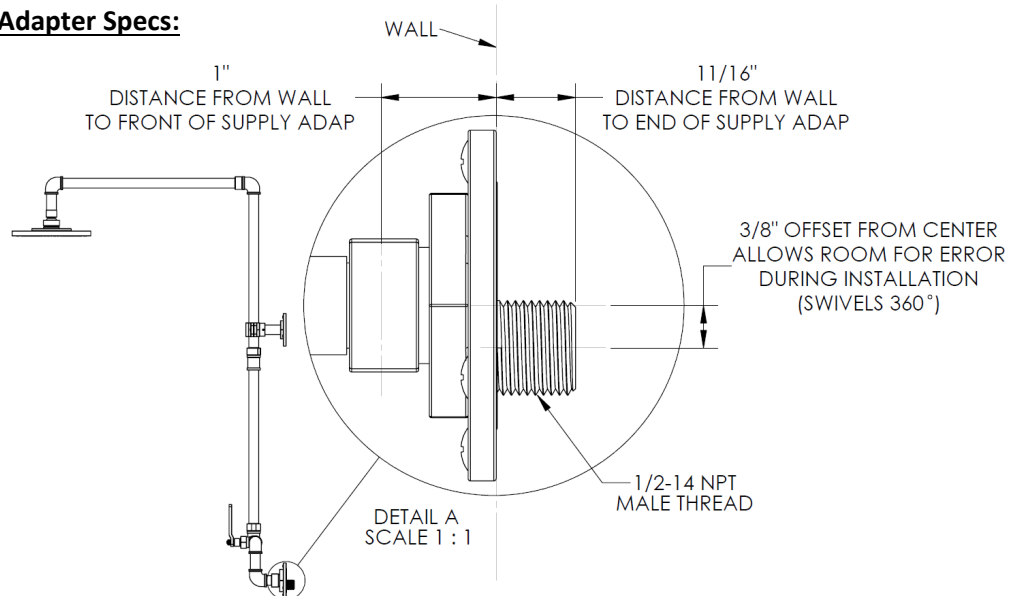


ITEM NO.	PART NUMBER	QTY.
2	38-2.3-VLV-BODY	2
3	CRT502 (HOT/COLD)	2
4	38-3.1-(U, V, W)-PIPE-ASSY	1
8, 8.1	38-3.1THRM-(E, F, G)-PIPE-ASSY	2
10	38-3.1-(O, P, Q, R)-PIPE-ASSY	1
12	38-2.3-ESC	2
13	EV4-LVR-H	1
14	EV4-LVR-C	1
15	EV4-POST-CAP	2
16	CR-PHMS 0.164-32x0.375x0.375-S	2
20	952-SMLL-GSKT	5
21	38-2.25-SPPLY-ADAP	2
22	38-2.25-FLNG	2
23	AS568 - 034	2

ITEM NO.	PART NUMBER	QTY.
24	CR-OHMS 0.19-24x0.25x0.25-S	6
26	SH-TIT50	1
27	CV15 SHORT	2
31	NEOPERL FLOW REGULATOR	1
32	38-3.1-MNTNG-FLNG	1
33	38-BRCKT-BACK	1
34	38-BRCKT-FRNT	1
35	SSCUPSKT 0.164-32x0.125-HX-N	2
36	CR-OHMS 0.19-24x0.5x0.5-C	2
37	CR-OHMS 0.19-24x1.5x1-C	3
38	AF6 WALL ANCHOR	3
40	38-3.1-MNTNG-PIPE	1
41	AS568 - 029	1



Supply Adapter Specs:



IMPORTANT INSTALLATION INFORMATION

- USE TEFLON TAPE OR PIPE SEALANT FOR THREADED CONNECTIONS
- DO NOT USE PLUMBER'S PUTTY ON ANY OF THE BRASS COMPONENTS
This will cause the finish to tarnish and void the warranty. A non-corrosive Alkoxy Silicone is recommended.
- DURING SWEATING OF LINES DO NOT OVERHEAT CASTING
Overheating may cause damage to internal mechanism
- COPPER ADAPTORS MAY BE REQUIRED TO COMPLETE YOUR INSTALLATION

For technical support, please call 718-257-2800