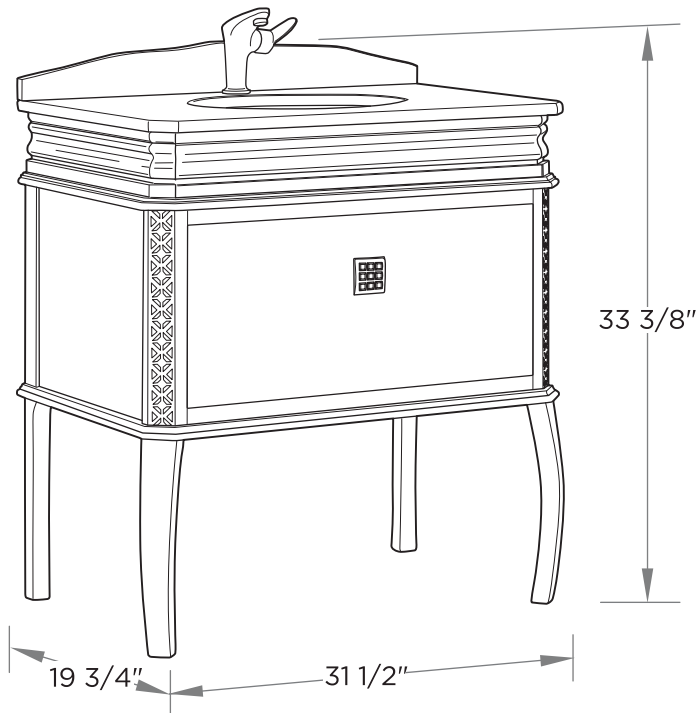
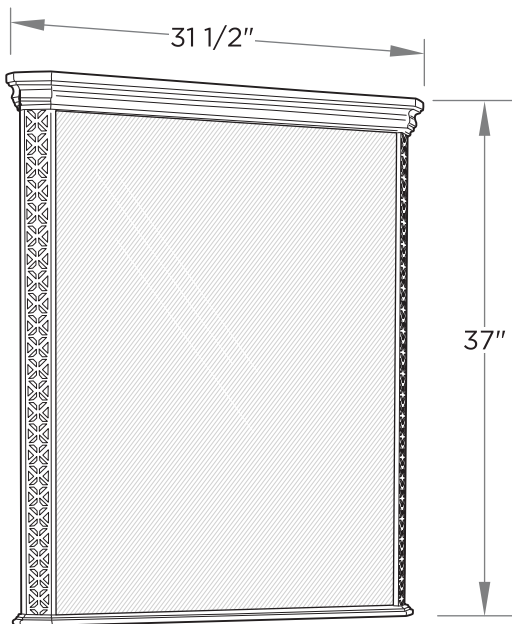




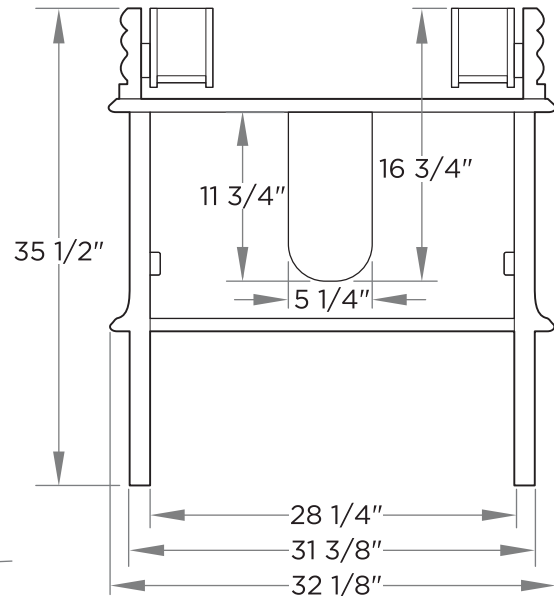
FPVN7524 LONDON INSTALLATION GUIDE



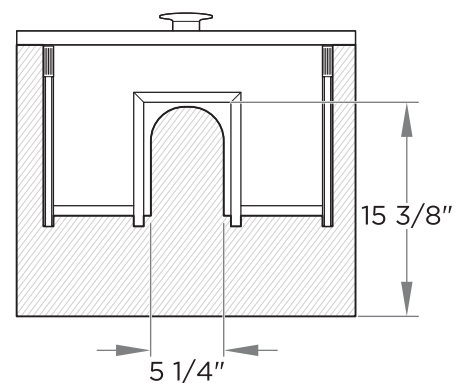
DIMENSIONS:



**VANITY
ENSEMBLE**
front view



CABINET
rear view

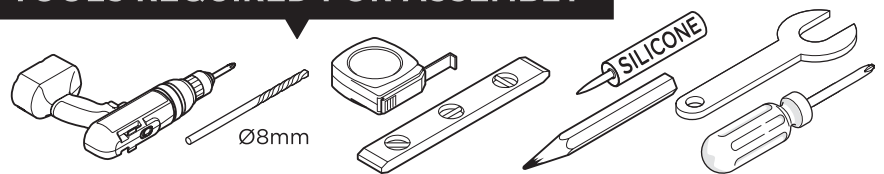


**BOTTOM
DRAWER**
top view

ALL DIMENSIONS &
SPECIFICATIONS ARE
APPROXIMATE AND
SUBJECT TO CHANGE
WITHOUT NOTICE.

INSTALLATION INSTRUCTIONS:

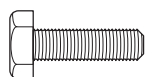
TOOLS REQUIRED FOR ASSEMBLY



Note:

Please read assembly instructions carefully before the installation.

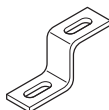
PARTS



A X4



B X4



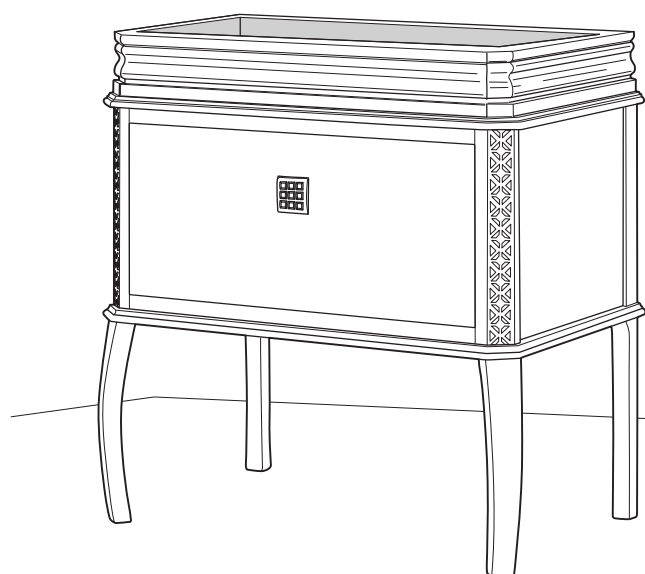
C X4



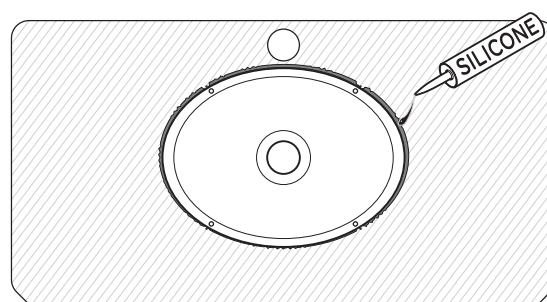
Note:

The factory is not responsible for any damage caused by wrong installation.

1. Place the vanity to designated position.

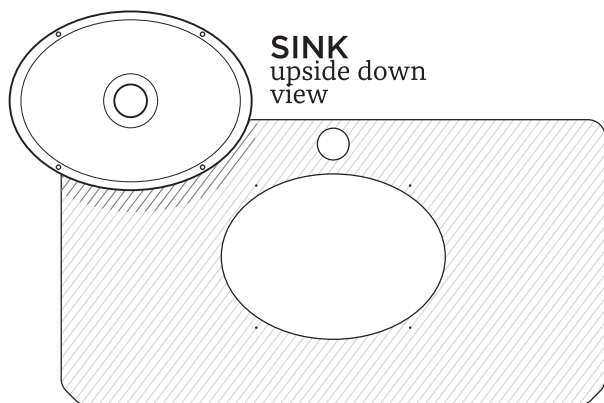


3. Place the sink evenly on the counter top and secure it with silicone.



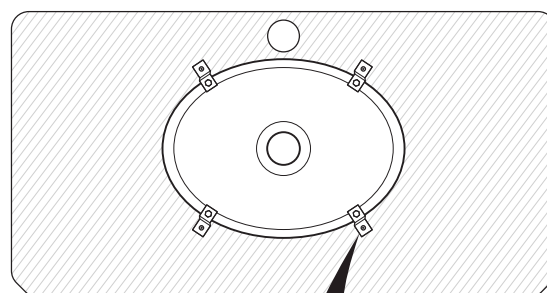
SINK & COUNTER TOP
upside down view

2. Flip the counter top upside down and start with attaching the sink to the counter top.

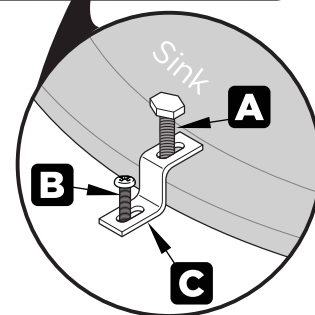


COUNTER TOP
upside down view

4. Use smaller bolts (**B**) to mount brackets (**C**) to the counter top and large bolts (**A**) to secure the sink.

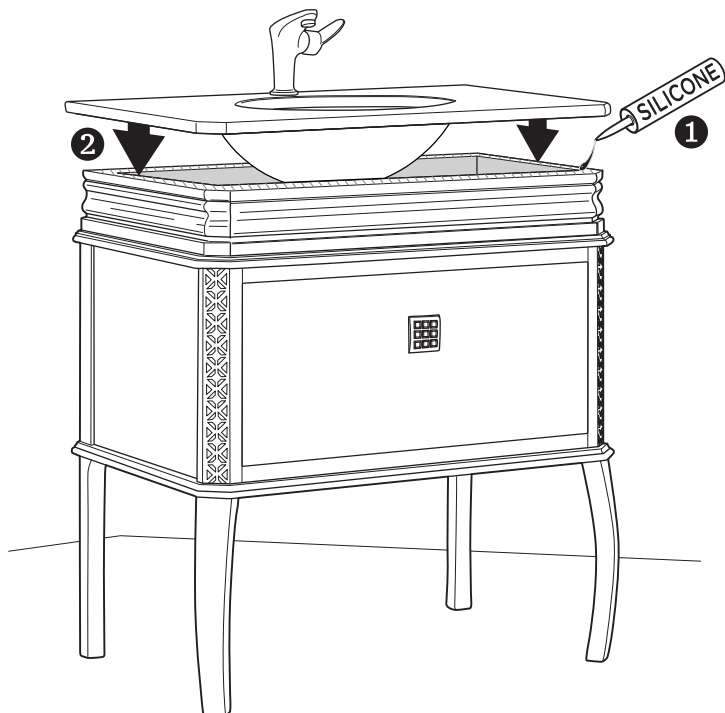


SINK & COUNTER TOP
upside down view

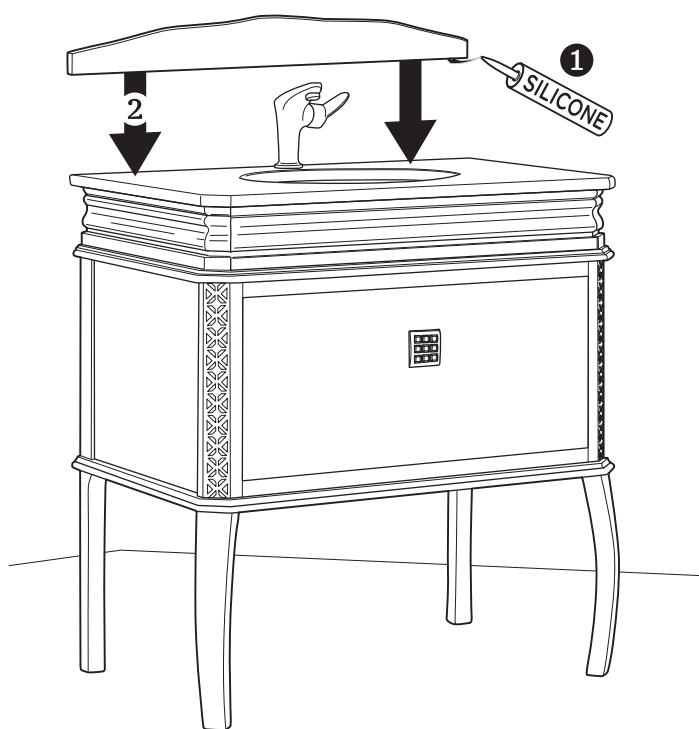


INSTALLATION INSTRUCTIONS:

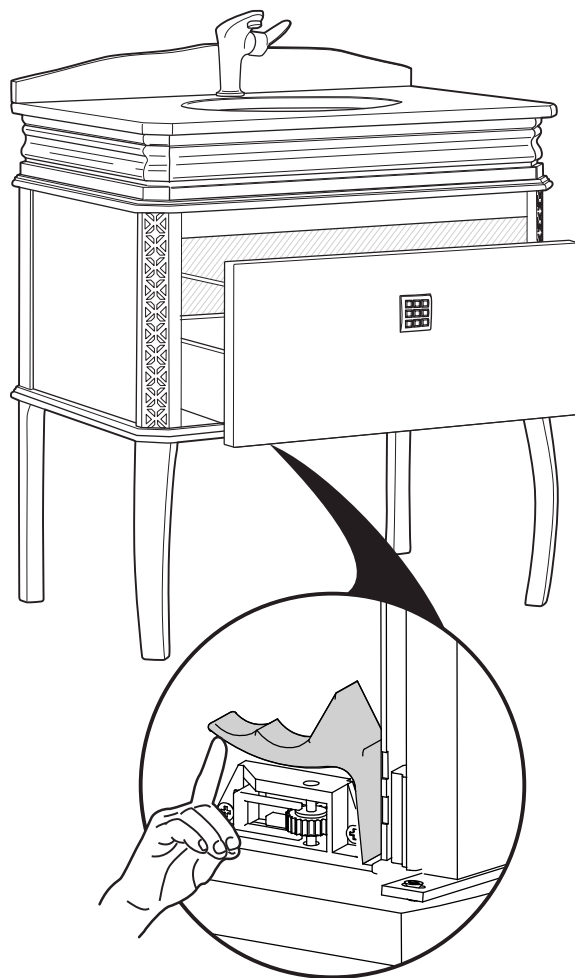
- 5.** Apply silicone on the edges of the cabinet and place the sink/counter top over it.



- 6.** Install the backsplash by securing it with the silicone.

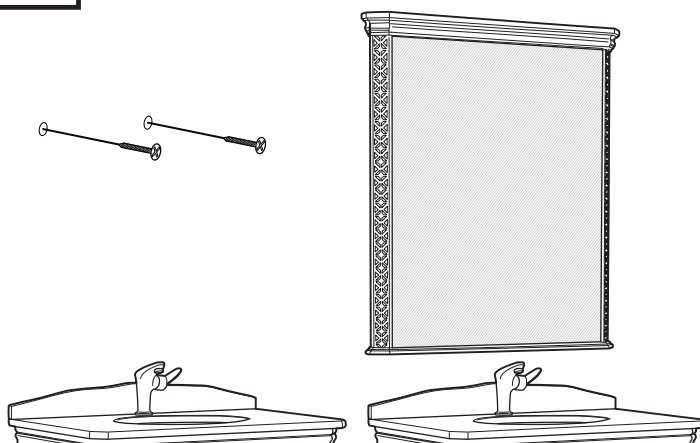


- 7.** Remove bottom drawer by pulling release hooks underneath.



- 8.** Install all plumbing components (Please refer to Pg.4 & Pg.5) then place the drawer back by simply inserting it back.

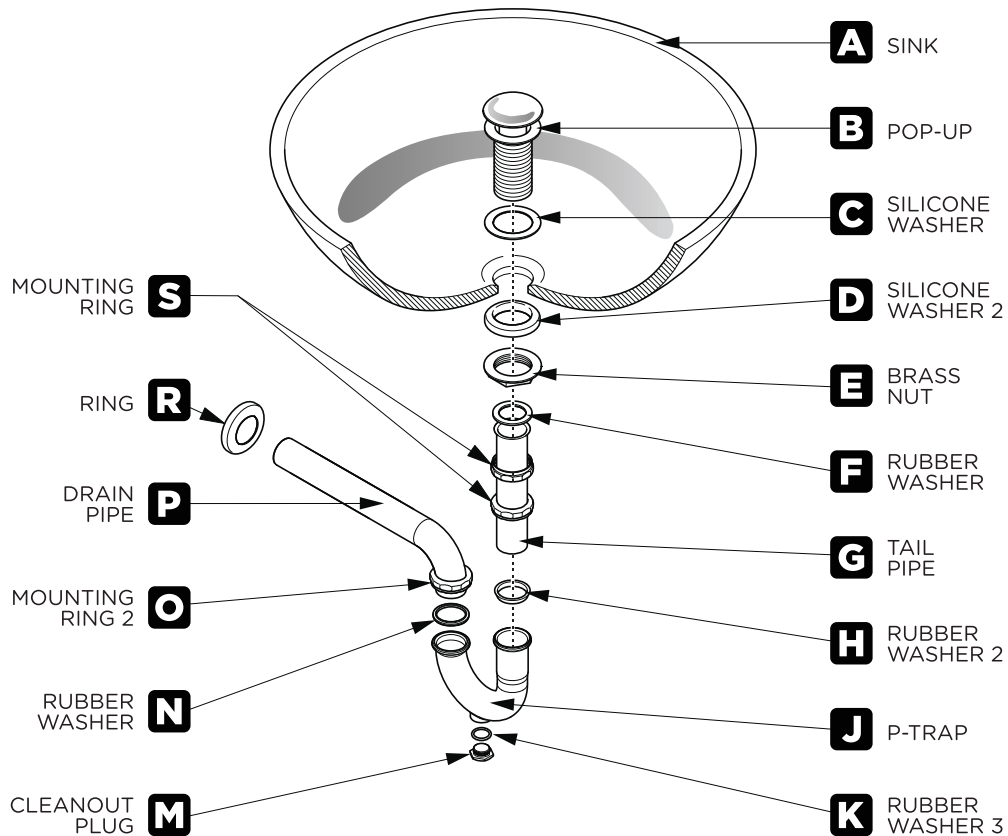
- 9.** Hang the mirror in desired location.



POP-UP & P-TRAP

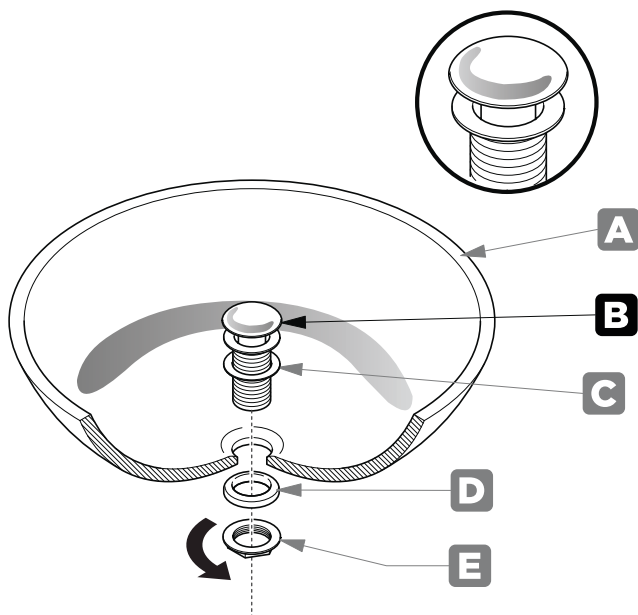
INSTALLATION INSTRUCTIONS:

Your item may appear slightly different from the illustration.



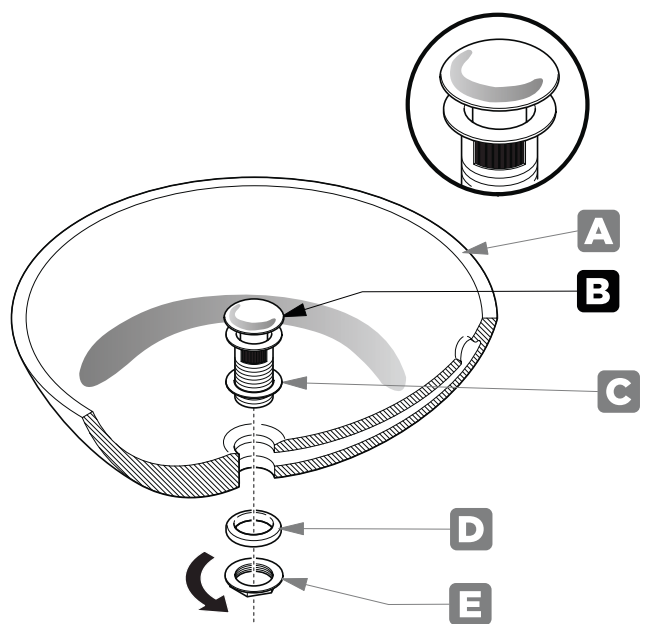
POP-UP INSTALLATION

**FOR SINKS
WITHOUT OVERFLOW**



OR

**FOR SINKS
WITH OVERFLOW**



FPVN7524

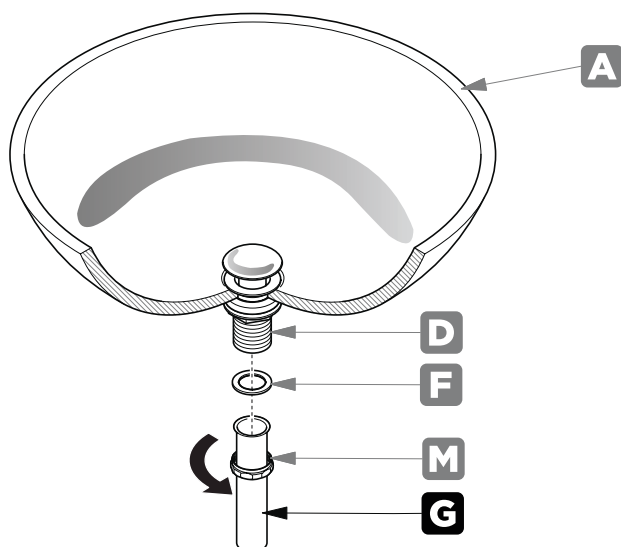
LONDON

INSTALLATION GUIDE

PAGE 4

P-TRAP INSTALLATION

1. Install tail pipe (G).



2. Install P-trap (J).

