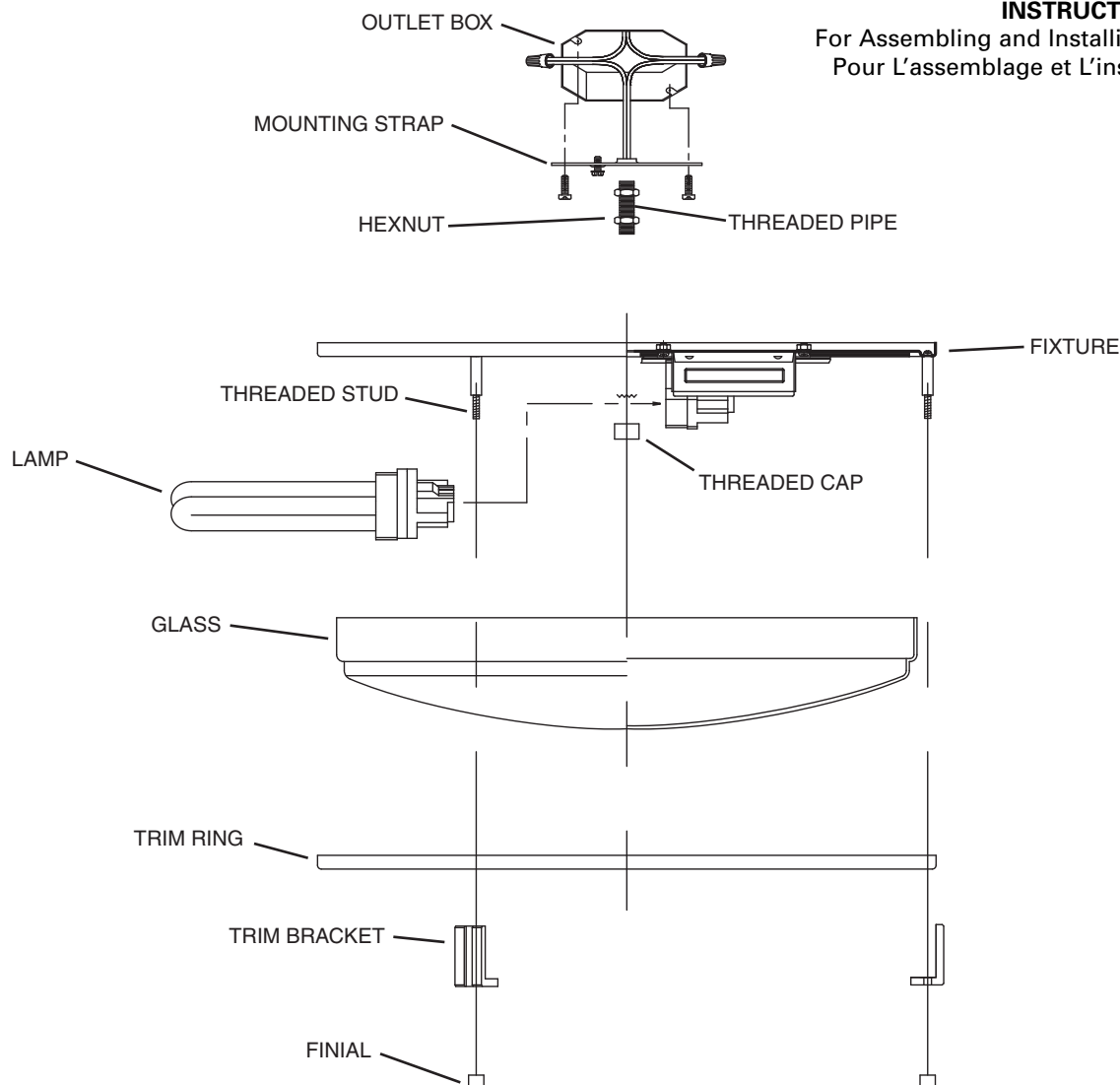


INSTRUCTIONS

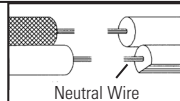
For Assembling and Installing Fixtures in Canada
Pour L'assemblage et L'installation Au Canada



- 1) Turn off power.
- 2) Attach mounting strap to outlet box. (Screws not provided.)
- 3) Screw threaded pipe into mounting strap.
- 4) Make wire connections (connectors not provided.) Reference chart below for correct connections and wire accordingly.

Connect Black or Red Supply Wire to:	Connect White Supply Wire to:
Black	White
*Parallel cord (round & smooth)	*Parallel cord (square & ridged)
Clear, Brown, Gold or Black without tracer	Clear, Brown, Gold or Black with tracer
Insulated wire (other than green) with copper conductor	Insulated wire (other than green) with silver conductor

*Note: When parallel wires (SPT I & SPT II) are used. The neutral wire is square shaped or ridged and the other wire will be round in shape or smooth (see illus.)



- 5) Push fixture to ceiling so threaded pipe can pass through hole and secure in place using lockwasher and hex coupling.
- 6) Thread hexnut onto threaded pipe so that 5 threads are exposed above hexnut. Thread that end of threaded pipe into hex coupling and tighten hexnut against coupling.
- 7) Insert lamps.
- 8) Carefully pass threaded pipe through hole in glass. (Not shown.)
- 9) If fixture has trim, slip over threaded pipe and against glass. Secure in place with finial. (Not shown.)
DO NOT OVER TIGHTEN.