



D106800BT

D106800BT

SPECIFICATIONS

TWO HANDLE WALL MOUNT ROUGH-IN VALVE

Model

D106800BT

Description

- Ceramic disc valve
- Combination 1/2" copper sweat/IPS connection
- Mounting plate included
- Can be installed with 1.2gpm, 1.5gpm, 1.75 gpm or 2.2 gpm two handle wall mount faucet trims

Standards



NSF/ANSI 372

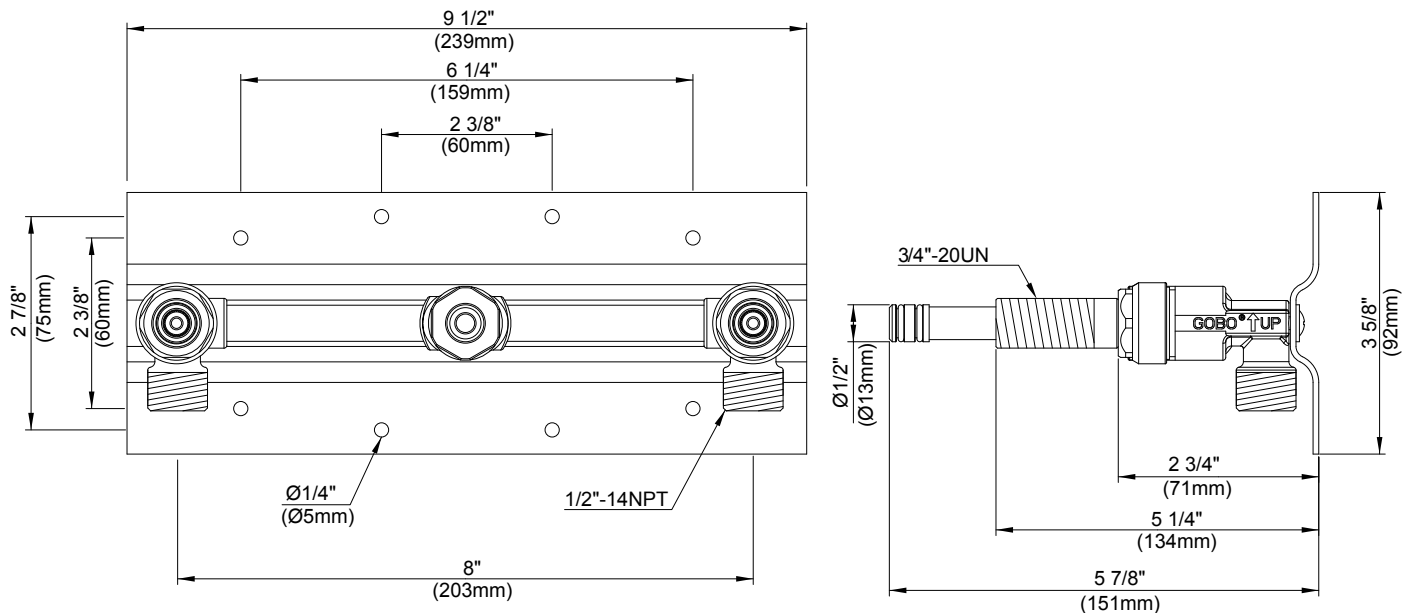
- NSF/ANSI 372

MEETS ASME
A112.18.1M/A112.18.1

- ASME A112.18.1M/A112.18.1

Warranty

Danze products are covered by a manufacturer's limited "lifetime" warranty for manufacturing defects.



Submittal Information:

Job Name: _____

Location: _____

Contractor: _____

Contact #: _____