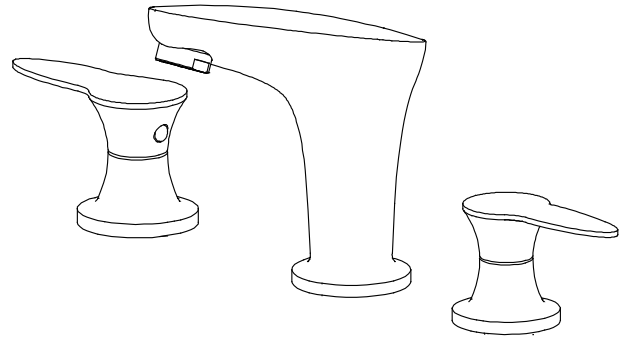


INSTALLATION INSTRUCTIONS

FFT3206CH

Three-hole faucet



Important

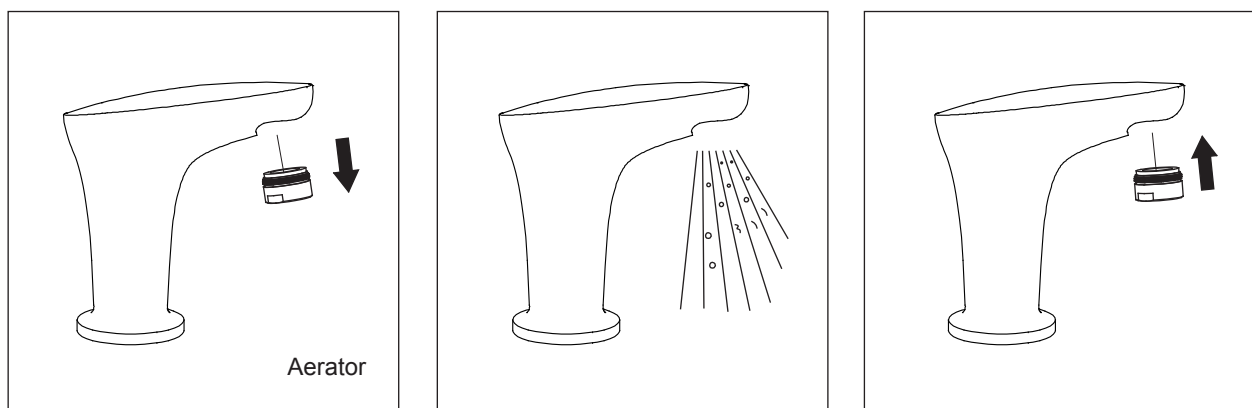
We recommend that this product is installed by a qualified professional contractor.

- Please check this product immediately to ensure that it has not been damaged and is complete.
- Please flush the water system to ensure that no debris or any other impurities can enter the taps.
- Turn off water supply before commencing work.
- Please read these instructions carefully and keep for future reference.

Cleaning

Before use: Unscrew the Aerator and allow the water to run freely for 5 minutes. Then screw the filter back in place.

Periodically: Unscrew the Aerator and remove. Rinse it with running water until any loose debris is cleared. Then replace the Aerator and tighten.

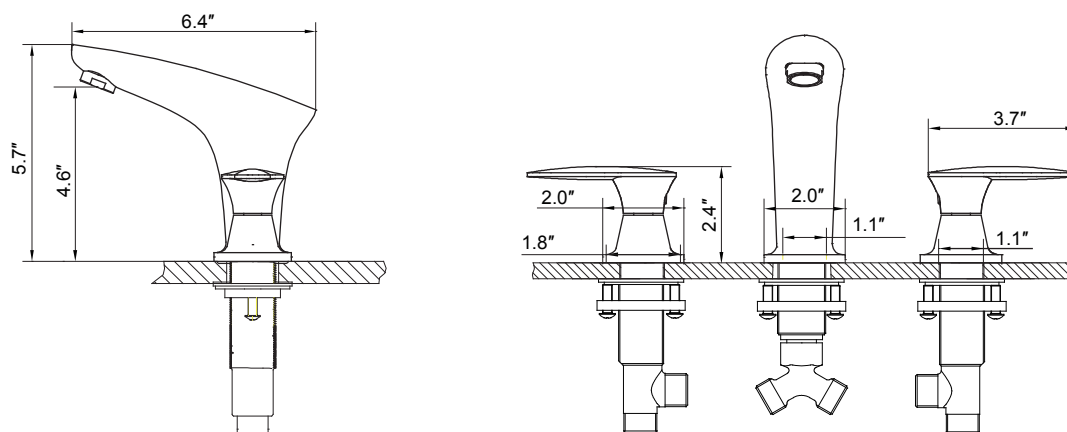


Maintenance

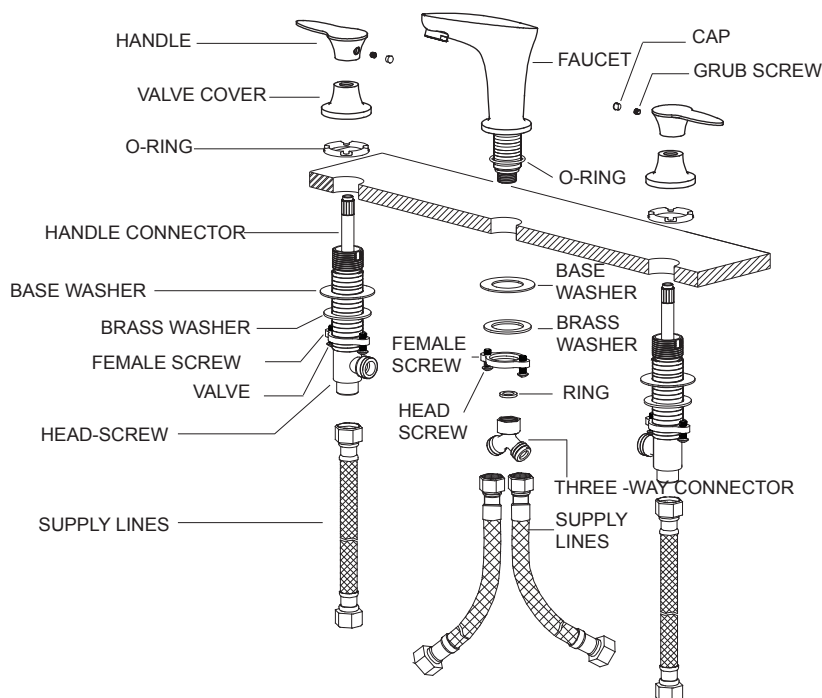
We do NOT recommend you use any household cleaners to clean the product. Because these cleaners change substance or formula too frequently. The product should always be cleaned only with soapy water and rinsed with clean water and dried with a soft cloth.

Dimensions

Unit: inches



Installation



- 1: Fit O-ring into the groove in the underside of faucet.
- 2: Place the faucet in the position on the basin. Tighten the base washer, the brass washer with the female screw from the under-side of the counter. Check that the faucet is correctly positioned, and install the three way connector by screwing onto the threaded tail pipe of the faucet.
- 3: Install valve into specified drill hole under-side the counter. Place o-ring into under the valve cover. Screw valve cover into valve. Adjust the height and position of valve, then screw female screw to tighten valve from the under-side of counter securely.
- 4: Install handle to handle connector of valve. Tighten grub screw with Allen key and then place cap on handle.
- 5: Screw supply lines into three way connector and valve. Connect the water supply pipes to the tail of supply lines with the hot water and cold water.

This faucet meets or exceeds the following standards:

ASME A112.18.1/CSA B125.1/NSF61-9

This product has been tested and certified by IAPMO.



IAPMO LISTED