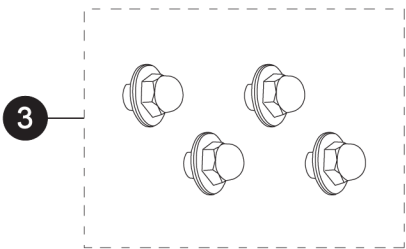
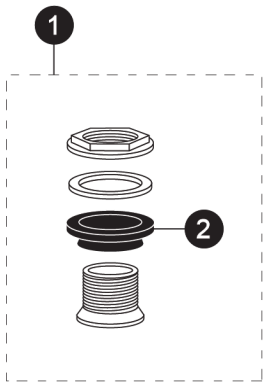


CT708EV  
CT708EVG

**Commercial Flushometer**  
**High Efficiency Toilet**  
**1.28 Gpf Toilet, Elongated**  
**Wall Hung, Back Spud Inlet**

Items	Parts	Description
1	THU073	Spud
2	THU120	Spud Gasket (10 pieces)
3	THU111	Retro-Fit Mounting bolt cap set (4 pieces) Sold separately



Sold separately -  
not included with toilet

**Note:**

Requires the use of any Jay R. Smith siphon jet support (four-bolt).

**Product Number Explanations**

**Commercial Toilet**

(CT) Commercial Toilet  
(708) Model  
(E) 1.28 Gpf  
(V) Back Spud Inlet  
(G) Sanagloss

**Colors**

(#01) Cotton

Actual Product may vary slightly from illustration.